

INSTRUCTIONS

for installing Overhead Crane Stops



ALDON[®]
Safety on Track Since 1904

Aldon Company, Inc. | 3410 Sunset Avenue | Waukegan, Illinois 60087

PH. 847.623.8800 | FX. 847.623.6139
www.aldonco.com | e-rail@aldonco.com

General Cautions

- **Do not use with railroad cars or gantry cranes.**
- Use with overhead cranes traveling at normal operating speeds.
- Use only on rail size indicated on wedge dogs or drag/hold-down plates.
- Use in pairs. Stops must be in alignment, so each stop is struck simultaneously.
- Wedge dogs and drag/hold-down plates must be tightly seated over wedge at all times.
- **Do not use as end-of-track stops.** Stops may slide short distances due to worn rail head conditions, wedge dogs and drag/hold-down plates not fully seated, improper bolt tightness, etc. Adequate distance must be kept between cranes. The customer will determine the safe distance.
- Do not install stops where rail joint bars or hook bolts (if applicable) may be contacted.
- It may be necessary to replace the hook bolts with rail clips.
- Crane operator must maintain control of crane at all times.
- If struck, check stop wedges, wedge dogs and drag/hold-down plate assemblies for damage.
- Provide a safe distance between location of stops and crane or other objects to be protected. Stops will slide some distance on impact depending on speed and weight of crane. The customer must decide the safe distance.

APPLICATION: Aldon crane stops are for temporary isolation of overhead cranes. Such isolation is necessary when one crane is undergoing maintenance with active cranes on the same runway or personnel are working on or near the crane runway.

Non-Slide Crane Stops



4016-20 Wheel-Contact



4016-21 Bumper-Contact

Cushion-Slide Crane Stops



4016-07 Wheel-Contact

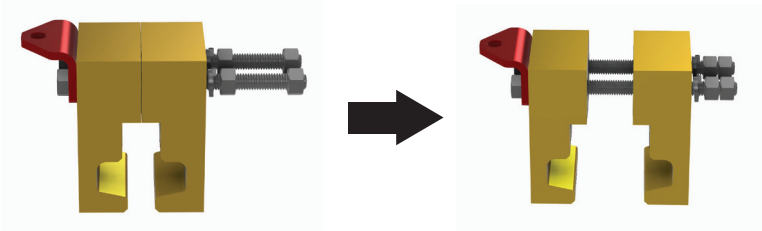


4016-08 Bumper-Contact

Non-Slide Wheel-Contact Installation

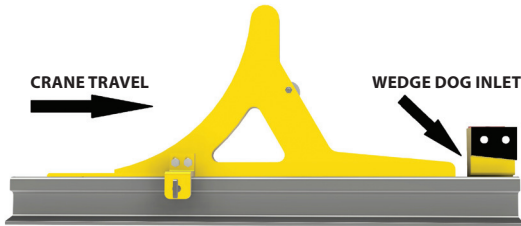
To begin installation, locate a suitable location for the stops free of rail defects, weld seams, joint bars, or other objects that may cause interference if the stop were to slide. **Crane wheel diameter must match the diameter marked on wheel-contact wedge.**

1. Loosen hex nuts from wedge dog and separate dog halves.

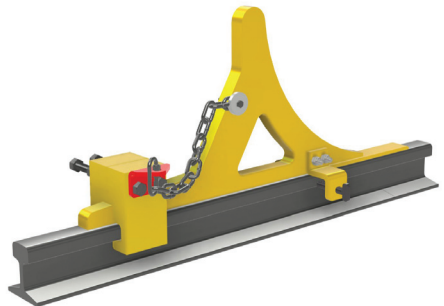


2. Place the wedge dog halves over the rail head with the wedge inlet to the direction of the crane to be stopped. Hand-tighten both hex nuts.

3. Next, place the wheel-contact wedge on the rail with the curved face towards the crane to be stopped.



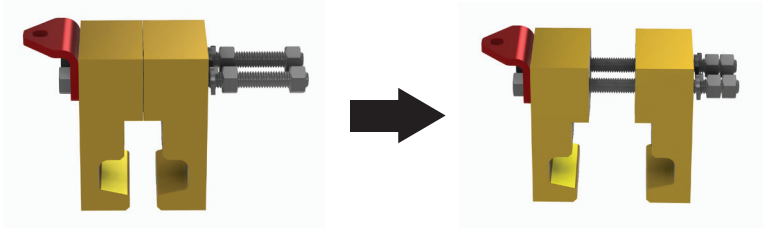
4. Slide the wedge dog assembly as far over the tail of the wheel-contact wedge as possible. **Make sure the inclined plane of the dog assembly mates to the inclined plane on the tail of the wheel-contact wedge.** You may find it necessary to lightly shake the wheel-contact wedge in order to allow the dog to fully ride up the wedge. **See page 5 for final wedge dog installation.**



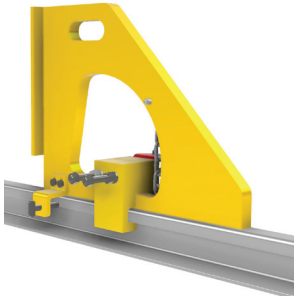
Non-Slide Bumper-Contact Installation

To begin installation, locate a suitable location for the stops free of rail defects, weld seams, joint bars, or other objects that may cause interference if the stop were to slide. **Centerline of bumper must not be higher than 12" from top of rail head.**

1. Loosen hex nuts from wedge dog and separate dog halves.



2. Place the bumper-contact wedge on the rail with the bumper plate in the direction of the crane to be stopped.



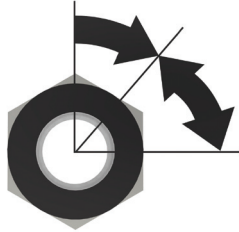
3. Place wedge dog halves over the bumper-contact wedge. **Make sure the inclined plane of the dog assembly mates to the inclined plane on the bumper-contact wedge.**
4. Slide the wedge dog assembly as far up the bumper-contact wedge as possible. You may find it necessary to lightly shake the bumper-contact wedge in order to allow the dog to fully ride up the inclined plane. **See page 5 for final wedge dog installation.**

Wedge Dog Installation

1. Wrench tighten the hex nuts until the lock washers are flat against wedge dog. Then, tighten an additional 45°-90°. **Next, open the threaded connector link attached to the chain on the wheel or bumper-contact wedge. Slide the connector link through the hole on the red bolt end of the wedge dog assembly. Tighten the connector link so it cannot be removed from the wedge dog.**



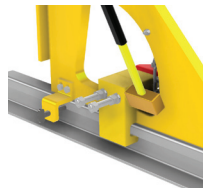
TIGHTEN UNTIL SPRING
LOCK WASHERS ARE FLAT



TIGHTEN ADDITIONAL
45°-90°

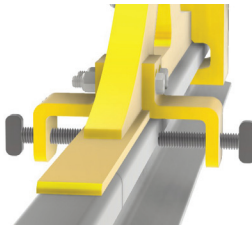
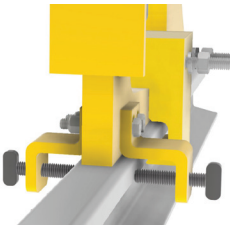


2. Using a soft-faced hammer, drive the wedge dog assembly onto the wheel or bumper-contact by striking rear face of the dog.



When installing the wedge dog on the bumper-contact wedge, strike both rear faces of the wedge dog alternately. Continue until the wedge dog is tightly seated over the bumper-contact.

3. Center the stop over the rail and hand tighten both thumbscrews against the side of the rail head.



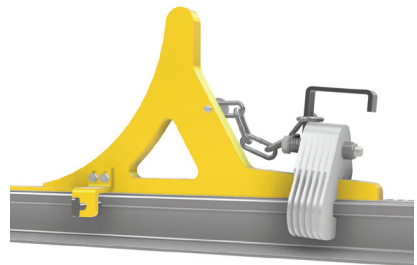
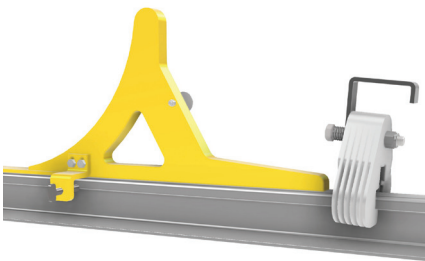
Cushion-Slide Wheel-Contact Installation

To begin installation, locate a suitable location for the stops free of rail defects, weld seams, joint bars, or other objects that may cause interference while sliding. **Crane wheel diameter must match the diameter marked on wheel-contact wedge.**

1. Flare out the drag plate assembly so it can be installed over the rail head. Place the drag plate assembly over the rail head and compress the plates such that the slot for the wheel-contact wedge is roughly squared.



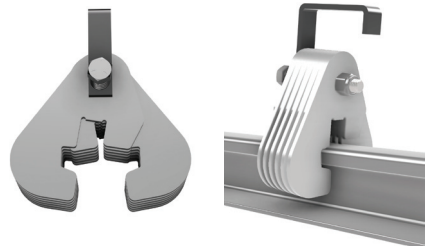
2. Slide drag plate assembly as far over the tail of the wheel-contact wedge as possible. Slide the safety chain attached to the wheel-contact over the drag plate handle to secure the wheel-contact to the drag plate assembly. **See bottom of page 7 for final drag plate installation.**



Bumper-Slide Wheel-Contact Installation

To begin installation, locate a suitable location for the stops free of rail defects, weld seams, joint bars, or other objects that may cause interference while sliding. **Centerline of bumper must not be higher than 12" from top of rail.**

1. Flare out the drag plate assembly so it can be installed over the rail head. Place the drag plate assembly over the rail head and compress the plates such that the slot for the bumper-contact wedge is roughly squared.

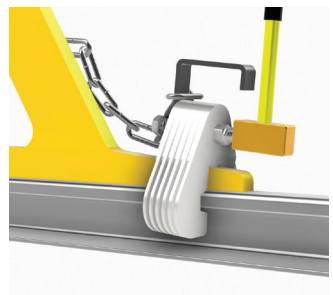


2. Place the bumper-contact wedge on the rail with the flat plate towards the crane to be stopped. Slide drag plate assembly as far over the tail of the bumper-contact wedge as possible. Slide the safety chain attached to the bumper-contact over the drag plate handle to secure the bumper-contact to the drag plates assembly. **See bottom of page 7 and page 8 for drag plate and hold down plate installation.**



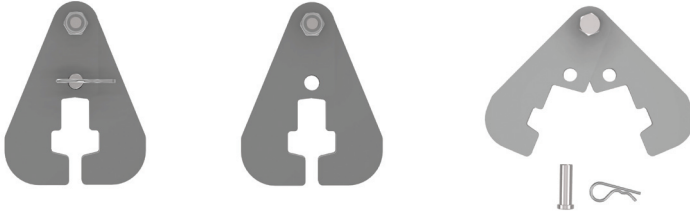
Drag Plate Installation

1. Using a soft faced hammer tap the drag plate assembly onto the tail of the wheel or bumper-contact wedge by lightly striking the end of the bolt. The drag plate assembly should slide up the tail of stop causing it to contact the underside of the rail head.

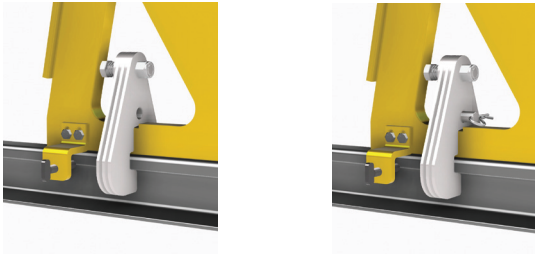


Hold-down Plate Installation

2. Remove the hitch pin and pivot lock pin from the hold-down plate assembly. Flare out the hold-down plate assembly so it may be installed over the rail head.



3. Place the hold-down plate assembly **over the bumper-contact wedge over the rail head**. Compress the plates around the rail head, and reinstall the pivot lock and hitch pin.



4. Center the stop over the rail and hand tighten both thumbscrews against the side of the rail head.



Aldon Company, Inc. | 3410 Sunset Avenue | Waukegan, Illinois 60087

PH. 847.623.8800 | FX. 847.623.6139
www.aldonco.com | e-rail@aldonco.com

Follow us on

