

# Aldon® Rail Skates

## Skate Inspection Guide



### Cautions

- For use on exposed rail ONLY.
- For rail sizes 90 to 155 lbs./yd.
- Use this product on standard size rail car wheels. (28" - 44" Wheel Diameters)
- Rail surface must be clean. Greasy rail can cause a skate to slide too freely.
- All workers and bystanders must stand well clear of sides and front of railcar or locomotive when wheels are mounting skates. Wheel pressure can suddenly "squeeze" a skate out from under with great force.
- Replace skate if tongue or rail flanges are broken or curled.
- Never use rail skates if one end of the railcar or locomotive is lifted up for inspection or repair. All wheels must remain on the rails.



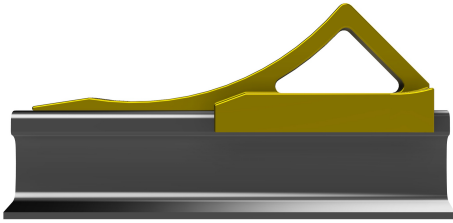
**ALDON®**  
Safety on Track Since 1904

Aldon Company, Inc. | 3410 Sunset Avenue | Waukegan, Illinois 60087

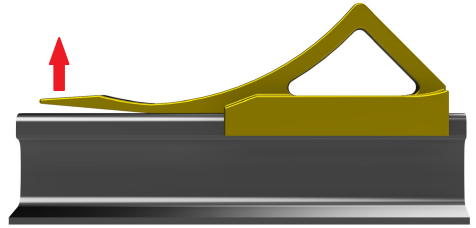
PH. 847.623.8800 | FX. 847.623.6139  
www.aldonco.com | e-rail@aldonco.com

# Skate Inspection

Inspect the tongue of the rail skate. If the tongue is broken or curled upward more than a 1/4" from the top of the rail, replace the skate. If the tongue is cracked replace the skate.

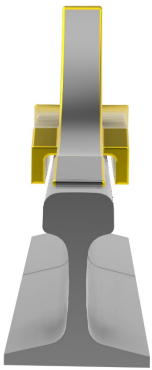


**Normal Skate Tongue**

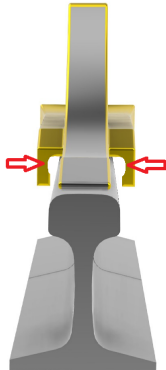


**Curled Skate Tongue**

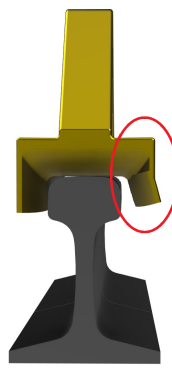
Replace the skate if there is more 3/16" wear to the inside wall of the rail flanges. The wear will appear on the flanges near the tongue of the skate. This can cause the flanges to crack, which can lead to bent or broken rail flanges. **Never use a skate that is cracked or broken.**



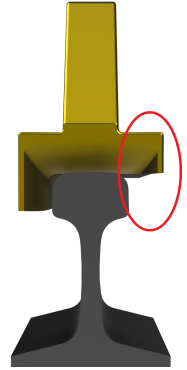
**Normal**



**Excessive Wear**



**Bent**



**Broken/Missing**



Aldon Company, Inc. | 3410 Sunset Avenue | Waukegan, Illinois 60087

PH. 847.623.8800 | FX. 847.623.6139  
www.aldonco.com | e-rail@aldonco.com

Follow us on



Printed in USA April 2026