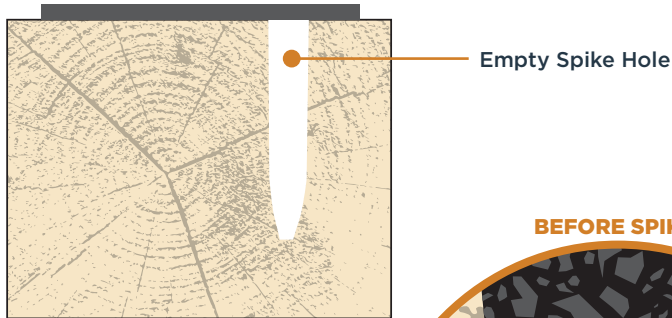
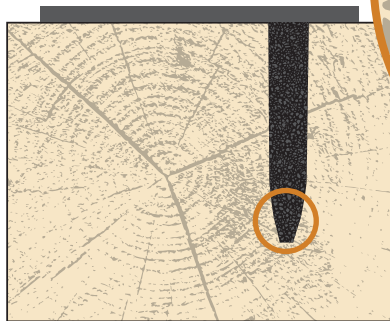




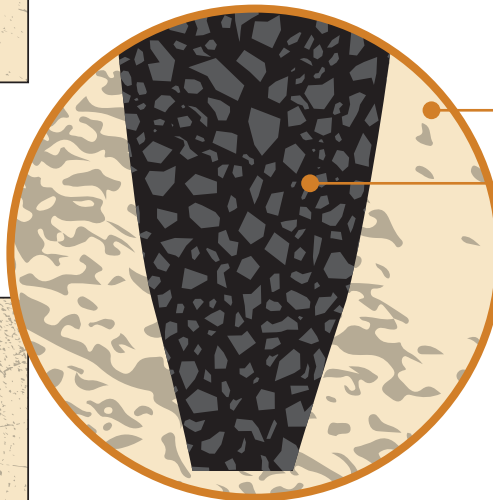
1. Remove Existing Spike



2. Fill Hole with Sure Spike

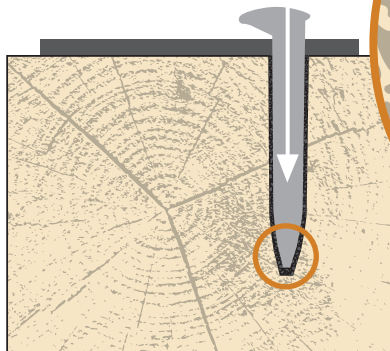


BEFORE SPIKE

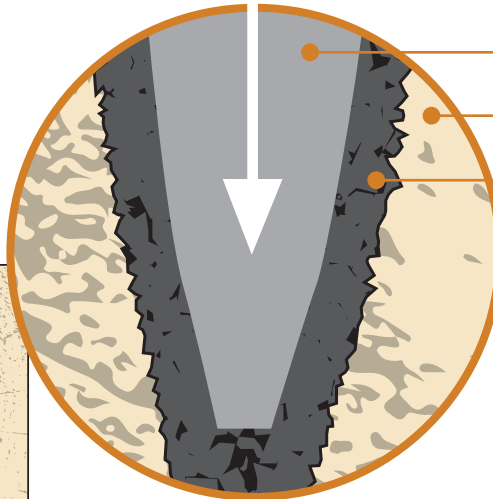


750% Magnification

3. Drive Spike into Sure Spike



AFTER SPIKE



750% Magnification

Railroad Solutions

100 South Santa Fe Drive

Denver, CO 80223

303.777.9692 | www.r-sols.com



**RAILROAD
SOLUTIONS**

Sure Spike Powder Detail Sheet

Actual Product in Tie (Cross Section)



Inserted Spike



Spike extracted - note visible
melting to tie