

Aldon® Manual Car Movers

Operation Instructions

4017-01 Wood Handle

4017-03 Aluminum Handle



Cautions

- Always check to make sure the manual car mover is in good working condition. Check handle for cracks or splits before each use.
- For use on flat track only. Do not use this product to push rail cars up or down slopes.
- Only attempt to move one rail car at a time.
- Do not stand or jump on the handle to gain more leverage when trying to move a rail car.
- Use this product on standard size rail car wheels.
(28" - 44" wheel diameters)
- Before moving any rail car, install blue flag protection for safety.



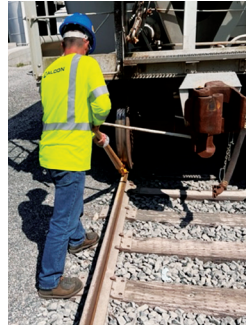
ALDON®
Safety on Track Since 1904

Aldon Company, Inc. | 3410 Sunset Avenue | Waukegan, Illinois 60087

PH. 847.623.8800 | FX. 847.623.6139
www.aldonco.com | e-rail@aldonco.com

Operation Instructions

1. Start by positioning the manual car mover under the rail car wheel. The car mover "cam" should contact the tread of the wheel while keeping the handle in an upright position centered over the rail.



Always operate the manual car mover from the field side of the tracks.

2. Now apply downward pressure on the handle causing the cam to rise upwards. During this motion, the car will begin to move forward slowly.



3. Repeat this process until the rail car is in the desired location. Set the rail car brakes and install wheel chocks.

Aldon Company, Inc. | 3410 Sunset Avenue | Waukegan, Illinois 60087

PH. 847.623.8800 | FX. 847.623.6139
www.aldonco.com | e-rail@aldonco.com

Follow us on



Printed in USA February 2024