

INSTRUCTION MANUAL

Spot Check Magnetic Laser Gauge and Clearance Measuring Device 4022-26



Aldon Company, Inc. | 3410 Sunset Avenue | Waukegan, Illinois 60087
PH. 847.623.8800 | FX. 847.623.6139
www.aldonco.com | e-rail@aldonco.com

LASER SETUP AND SETTINGS

Before using our *SPOT CHECK MAGNETIC LASER GAUGE*, while working in the field, always install blue flag protection for worker safety (for additional information, see inside back cover or visit aldonco.com).

Aldon® *SPOT CHECK MAGNETIC LASER GAUGE* should arrive to you fully assembled, inspected for accuracy, and ready to use. If the laser is reset to factory defaults follow these simple steps to setup the laser.

Step 1. Setup System Units



To adjust the units of measure press and hold the [*FUNC*] key in the middle of the keypad. When the screen changes to a menu, release the button.

Using the [*LEFT ARROW* “-”] and [*RIGHT ARROW* “+”] keys, rotate the menu to the “ft/m” setting. Then press the [*FUNC*] key to enter into the units menu.

Using the [*LEFT ARROW* “-”] and [*RIGHT ARROW* “+”] keys, rotate the menu to the desired units of measure. Press the [*FUNC*] key to set the units.

Aldon® *SPOT CHECK MAGNETIC LASER GAUGE* laser can display measurements in the following units:

- Inches (1/32in resolution)
- Feet (0.001ft resolution)
- Feet & Inches (1/32in resolution)
- Meters (0.001m resolution)
- Centimeters (0.01cm resolution)

Step 2. Set Indexing Point

The *SPOT CHECK MAGNETIC LASER GAUGE* can take measurements from the laser’s bottom edge, top edge, or from a tripod point. To use the laser for measuring track gauge or overhead clearance, the laser must be set to index from the laser’s bottom edge.



INDEX KEY

To select the indexing point press the index key on the key pad.

Using the [left arrow “-”] and [right arrow “+”] keys, rotate the menu to the image showing the yellow arrow originating from the bottom of the laser. Press the [*Func*] key to set the index point.

MEASURING TRACK GAUGE

Step 1. Turn Power On



Press the **POWER KEY** located on the key pad.

The laser will be activated and begin taking continuous readings.

POWER KEY

Step 2. Install the Laser On Rail

Place the **SPOT CHECK MAGNETIC LASER GAUGE** horizontally on the rail head with the foot of the laser against the gauge-face of the rail. Two magnets will secure the device to the rail until adjustments are made. The foot of the laser's base is designed to contact the rail approximately 5/8" down from the top of the top of the rail head. It is also designed to clear most cases of rail flow.



NOTE: When placing the laser on the rail, make sure both thumb screws are fully backed out.

Step 3. Taking Measurements

Aim the laser at the opposite rail, adjust both thumb screws until the laser is approximately 5/8" below the top of the rail.



The measurement will be displayed on the screen. If you want/need to pause from taking measurements, press the red arrow key on the keypad.



RED ARROW KEY

MEASURING TRACK GAUGE

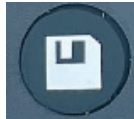
Step 3. Taking Measurements (Continued)



To pause or save a measurement, press the **RED ARROW KEY**.

To continue taking new measurements, press the **RED ARROW KEY** again.

The laser will store the last 10 measurements that were paused.



To access the measurements stored in memory, press the **FLOPPY DISK KEY** on the keypad.

FLOPPY DISK KEY

MEASURING OVERHEAD CLEARANCE

Aldon® **SPOT CHECK MAGNETIC LASER GAUGE** makes quick and precise measurements of overhead track clearance.

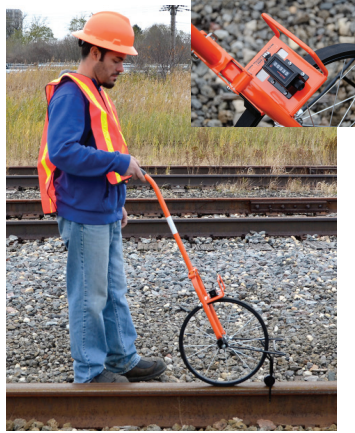


To measure overhead clearance, simply orient the laser vertically as shown on the left.

RECOMMENDED PRODUCTS



Multi-Purpose Step
Measurement Gauge
4123-141



Rolling Distance Counter
4024-02



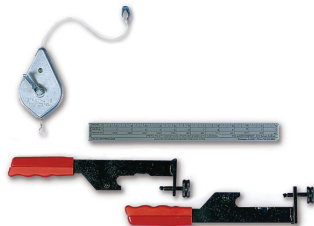
#23 Aluminum Level & Gauge
Combination
4022-03



#3 Aluminum Gauge
4022-02



Track Inspector Tape Measure
25 Foot
4124-316



Stringline
4024-03

RECOMMENDED PRODUCTS



SaberTooth® Portable 2-Way
Locomotive Derail
4014-08-S



SaberTooth® Portable Derail
Left Throw
4014-06-S



SaberTooth® Portable Derail
Right Throw
4014-07-S



Magnetic Mini-Light
For Sign Holders
4015-32



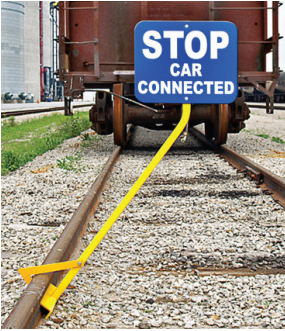
Replacement Derail Sign Plate
4015-71 Blue
4015-72 Red



Derail Padlock
3/8" x 2-2/2" Shackle
4124-97

Additional Derails and
Derail Accessories Available

RECOMMENDED PRODUCTS



Clamp-On Sign Holder
4015-01



Magnetic Rail-Top Sign Holder
4015-230

Additional Sign Holders Available
Sign Plates Sold Separately



Stop Crew At Work (RED)
6SCAW-R



Stop Employees Working (Blue)
6SEW-B

Additional and Custom
Sign Plates Available

Visit **ALDONCO.com** to view our wide range of derails, sign holders, track repair products and more.



Aldon Company, Inc. | 3410 Sunset Avenue | Waukegan, Illinois 60087

PH. 847.623.8800 | FX. 847.623.6139
www.aldonco.com | e-rail@aldonco.com

Rev 08/2021