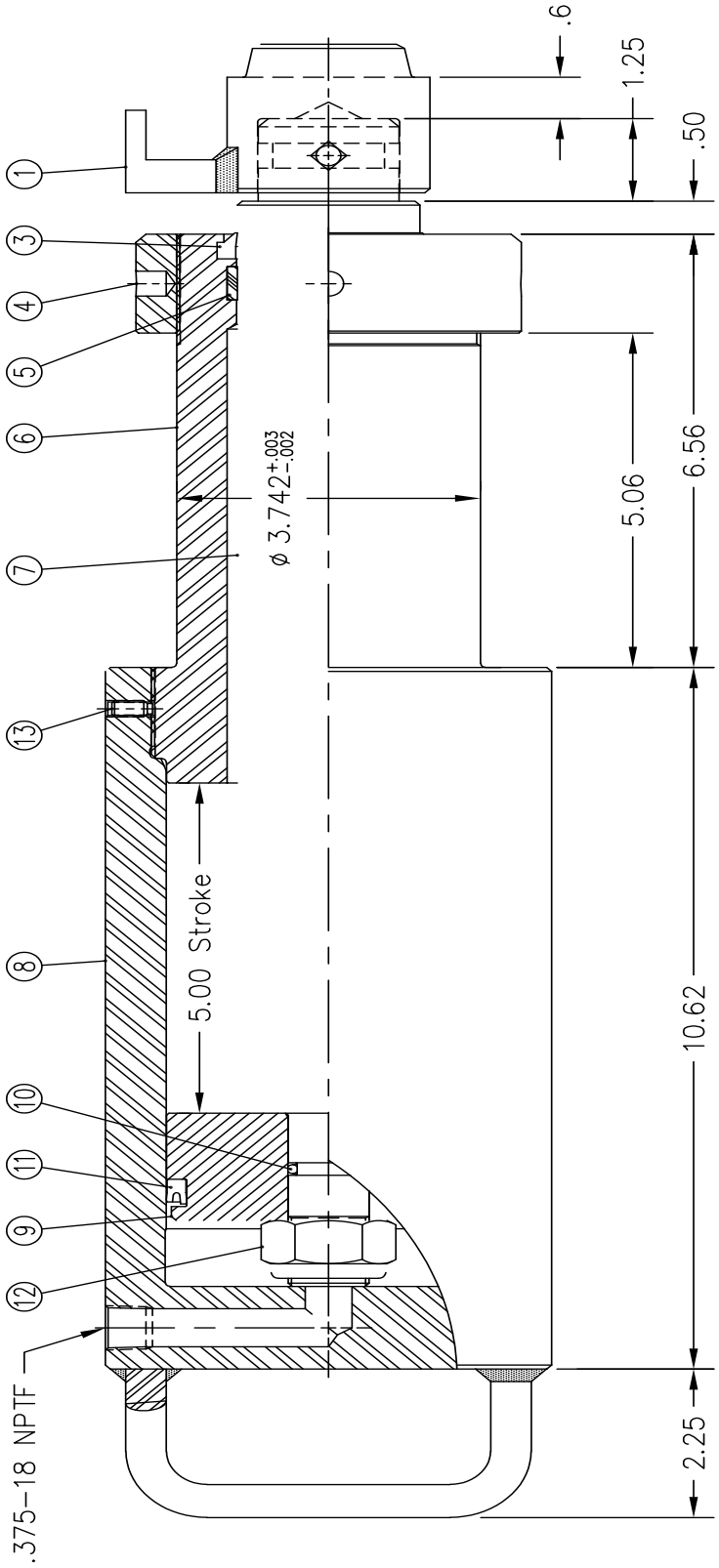


THIS DRAWING IS TRANSMITTED IN CONFIDENCE THAT ANY AND ALL INFORMATION INCLUDED WITHIN ARE THE SOLE PROPERTY OF ALDON COMPANY, INC. THIS DRAWING MAY NOT BE REPRODUCED OR TRANSMITTED IN PART OR WHOLE WITHOUT WRITTEN CONSENT.



Item	Part No.	Qty.	Description
1	1011	1	Swivel Head Assembly
2	1010	2	Swivel Head Retaining Screw
3	MK1740-8	1	Piston Rod Wiper
4	1008	1	Cylinder Lock Nut
5	MK1740-7	1	Rod Wear Ring
6	MK1740-2	1	Cylinder Head
7	MK1740-3	1	Piston Rod
8	MK1740-1	1	Cylinder Tube Assembly
9	MK1740-4	1	Piston
10	MK1740-9	1	Piston to Rod Seal
11	MK1740-10	1	Piston Seal
12	MK1740-5	1	Piston Retaining Nut
13	MK1740-13	1	Cylinder Head Retaining Screw

FINISH: YELLOW POWDER COAT

SCALE: *DO NOT SCALE*

HEAT TRT: -

MATERIAL: SEE INDIVIDUAL COMPONENTS

TOLERANCE

DECIMAL

.XX:

.XXX:

FRACTION

XX/XX:

ANGLE

X°:

DATE: 1/26/2024

ALDON Company, Inc.

3410 Sunset Avenue, Waukegan, Illinois, 60087

Phone: 847-623-8800 Fax: 847-623-6139

TITLE: 50 TON RAIL BENDER

DRAWING: 1 OF 1 Part No. 6115 REV: -