

# Aldon® Cushioned Crane Stops

## Installation Instructions

4016-07 & 4016-08



**ALDON®**  
Safety on Track Since 1904

Aldon Company, Inc. | 3410 Sunset Avenue | Waukegan, Illinois 60087

PH. 847.623.8800 | FX. 847.623.6139  
www.aldonco.com | e-rail@aldonco.com

# Application

Aldon® cushioned crane stops are for temporary isolation of overhead cranes. Such isolation is necessary when one crane is undergoing maintenance with active cranes on the same runway or personnel are working on or near the crane runway.

## GENERAL CAUTIONS

- Use with overhead cranes traveling at normal operating speeds.
- Do not use with railroad cars, other vehicles or gantry cranes.
- Use only on rail size indicated on drag and hold-down plates.
- Use in pairs. Stops must be in alignment so each stop is struck simultaneously.
- Drag plates must be tightly seated over wedge at all times.
- Do not use as end-of-track stops. Stops are designed to slide short distances. Adequate distance must be kept between cranes.
- Do not install stops where rail joint bars may be contacted.
- Drag and hold-down plate assemblies may interfere with hook bolts (if applicable). Alternate means of fastening the rail, such as rail clips, should be used in areas where stops are to be used.
- Crane operator must maintain control of crane at all times.
- If struck, check stop wedges and plate assemblies for damage.
- Provide a safe distance between location of stops and crane or other object to be protected. Stops will slide some distance on impact depending on speed and weight of crane. The customer must decide the safe distance.

### Wheel Contact Style (4016-07)



Use only with wheel diameter marked on wheel-contact wedge.

### Bumper Contact Style (4016-08)

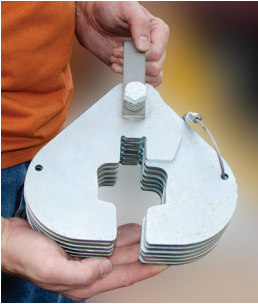


Rail sizes marked on hold-down plates must match that of the drag plate assembly. Centerline of bumper must be no higher than 12" from top of rail head.

## Installation: Wheel Contact (4016-07)

To begin installation, locate a suitable location for the stops free of rail defects, weld seams, joint bars, or other objects that may cause interference while sliding.

1. Flare out the drag plate assembly so it can be installed over the rail head.



2. Place the drag plate assembly over the rail head and compress the plates such that the slot for the wheel-contact wedge is roughly squared.



3. Place the wheel-contact wedge on the rail with the curved face towards the crane to be stopped.

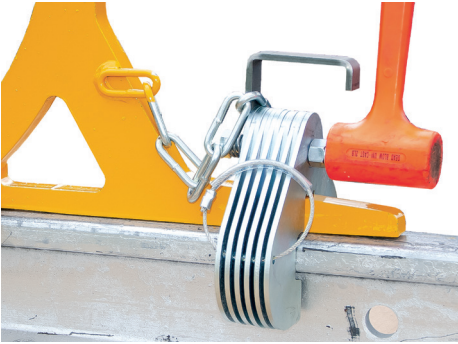


## Installation: Wheel Contact (4016-07)

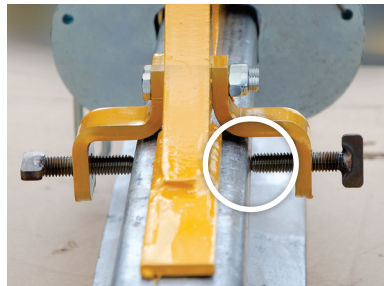
- Slide drag plate assembly as far over the tail of the wheel-contact wedge as possible. Slide the safety chain over the drag plate assembly handle as you were threading a needle.



- Using a soft faced hammer, tap the drag plate assembly onto the wheel-contact wedge by lightly striking the end of the bolt.



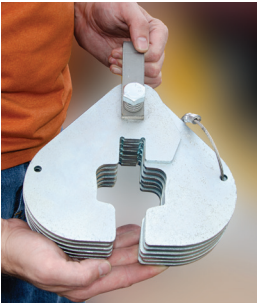
- Tighten the thumb screws.



## Installation: Bumper Contact (4016-08)

To begin installation, locate a suitable location for the stops free of rail defects, weld seams, joint bars, or other objects that may cause interference while sliding.

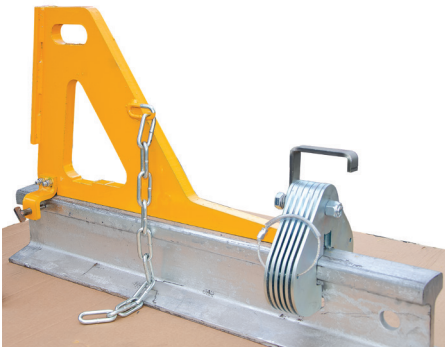
1. Flare out the drag plate assembly so it can be installed over the rail head.



2. Place the drag plate assembly over the rail head and compress the plates such that the slot for the bumper-contact wedge is roughly squared.

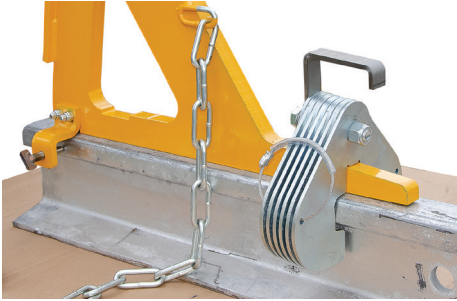


3. Place the bumper-contact wedge on the rail with the flat plate towards the crane to be stopped.

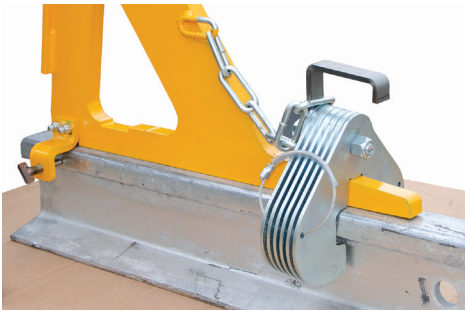


## Installation: Bumper Contact (4016-08)

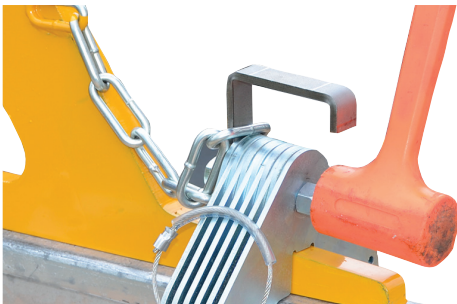
4. Slide drag plate assembly as far over the tail of the bumper-contact wedge as possible.



5. Slide the safety chain over the drag plate assembly handle as if you were threading a needle.



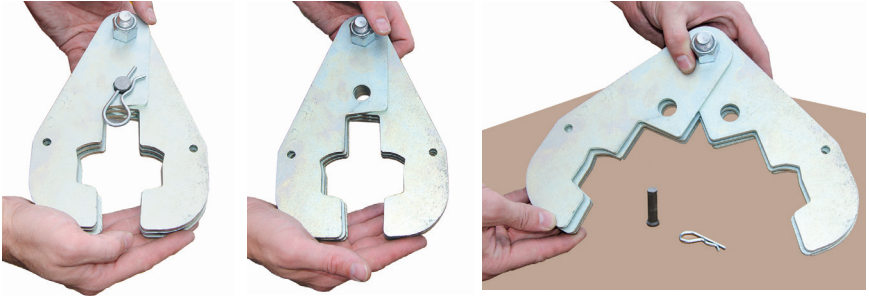
6. Using a soft faced hammer, tap the drag plate assembly onto the wheel-contact wedge by lightly striking the end of the bolt.



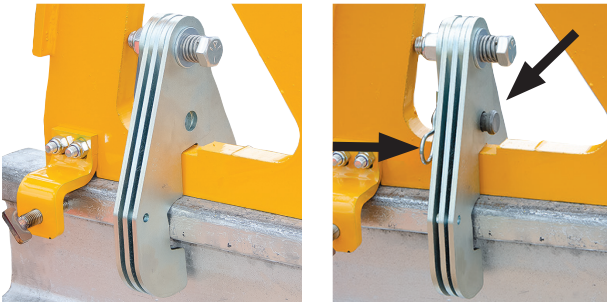


## Installation: Bumper Contact (4016-08)

7. Remove the hitch pin and pivot lock pin from the hold-down plate assembly. Flare out the hold-down plate assembly so it may be installed over the rail head.

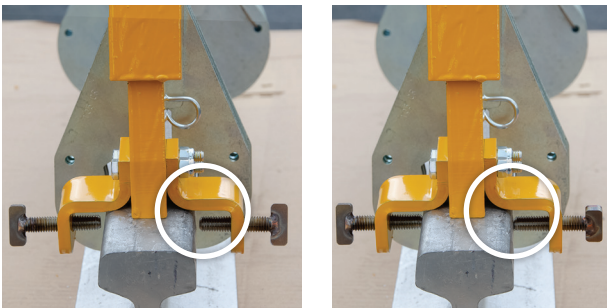


8. Place the hold-down plate assembly over the bumper-contact wedge.



Compress the plates around the rail head, and reinstall the pivot lock and hitch pin.

9. Tighten the thumb screws.



## Related Items

### Aldon® Non-Sliding Crane Stops



**4016-20**  
Wheel Contact Style



**4016-21**  
Bumper Contact Style



**ALDON®**  
Safety on Track Since 1904

**Aldon Company, Inc. | 3410 Sunset Avenue | Waukegan, Illinois 60087**

PH. 847.623.8800 | FX. 847.623.6139  
www.aldonco.com | e-rail@aldonco.com

Follow us on



Printed in USA November 2023