

Aldon® Economy Track Gauge Reader

Installation & Operation Instructions

4022-10



ALDON®
Safety on Track Since 1904

Aldon Company, Inc. | 3410 Sunset Avenue | Waukegan, Illinois 60087

PH. 847.623.8800 | FX. 847.623.6139
www.aldonco.com | e-rail@aldonco.com

Features

- Measure up to 2-inches gauge variation.
- Spring-action telescopic assembly expands and contracts as gauge changes.
- Easy to read gauge scale.
- Measures gauge constantly at walking speed.



Handle



Economy Track Gauge Reader – Lens Half



Economy Track Gauge Reader – Scale Half

How to Install Your Gauge Reader on The Rail

1. Start by positioning the “scale half” of the track gauge reader on the rail. Wheel placement is important. One set of wheels should sit on top of the rail and the other against the gauge face.



2. Insert the “lens half” of the track gauge reader into the “scale half”. When inserting the lens half, the wheels on scale half should be in contact with the rail head.



3. Continue inserting the lens half, making sure all four wheels on the scale half are positioned correctly on the rail head.

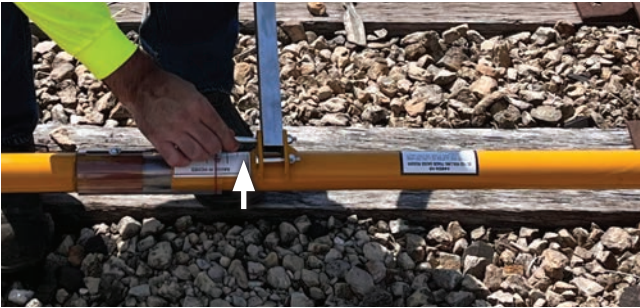


Installation

4. With the lens half fully inserted, position the wheels on the rail head. When installed properly, all eight wheels should contact the rail head.



5. Remove the spring pin from the handle mount and install the handle. Replace pin.



6. With the handle installed, check to make sure the track gauge reader rolls smoothly on top of the rail.



How to Measure Gauge Using Your Gauge Reader

Each track gauge reader comes calibrated to measure 56-1/2" gauge. It is designed to measure up to 2-inches of gauge variation.



The large gauge scale and red lens mark make it easy to read your gauge measurements.

Once your track gauge reader is properly installed, start rolling it down the rail while watching the gauge scale.

As you continue to check the gauge, the track gauge reader will expand or contract providing you with an accurate measurement.



Please note: Economy Track Gauge Readers are not designed to roll through rail crossings and switches. If you need to measure gauge between rail crossings and switches use the Roadmaster Gauge Reader. (4022-14)

How to Recalibrate Your Gauge Reader

If you need to recalibrate your track gauge reader, take a measurement from a section of track. Reinstall the track gauge reader where the measurement was taken.

Loosen the Phillips head bolt in the slotted area of the lens and slide the red mark on the lens to the desired measurement. Retighten the Phillips head bolt and make sure the gauge reading is correct.

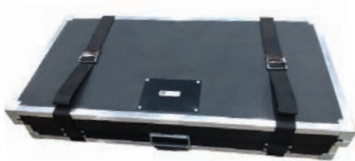


Never over tighten the Phillips head bolt. This could cause the lens to crack.

Contact Aldon Company Inc. for replacement parts.

ACCESSORIES

Carrying Case



4022-11

Distance Counter



4022-13

RELATED ITEMS

Roadmaster Gauge Reader

Roll through switches and rail crossings without stopping.



4022-14

Clamp-On Sign Holder

Clamps to rail head.
Sign plate not included



4015-01

Rail Top Distance Counter

Take measurements in feet ranging up to 10,000 feet.
Use on exposed or flush rail.



4024-10

Digital Mismatch Gauge

Designed to measure rail ends for mismatch on the gauge side and top side of rails.



4022-27

Stringline

Measure track curvature.



4024-03

Blue OSHA Signs

12" x 15" Engineer grade retro-reflective coating.



6SCAW-B



Aldon Company, Inc. | 3410 Sunset Avenue | Waukegan, Illinois 60087

PH. 847.623.8800 | FX. 847.623.6139
www.aldonco.com | e-rail@aldonco.com

Follow us on



Printed in USA November 2023