

# Aldon® CS-2 Self-Tightening Car Stops

## Installation Instructions

4016-03



Aldon Company, Inc. | 3410 Sunset Avenue | Waukegan, Illinois 60087

PH. 847.623.8800 | FX. 847.623.6139  
www.aldonco.com | e-rail@aldonco.com

# Application

Aldon® CS-2 Self-Tightening Car Stops allow positive stopping and/or blocking of railcars with the advantage of being easily assembled on and off the rail with standard hand tools and no modification or drilling of the rail.

## General Cautions

- For use with 80-141 lbs/yd conventional exposed T-rail only.
- Always use in pairs which are in exact alignment to each other.
- For use with standard size railcars only.  
**(Wheel diameters 28" to 40" Only)**
- Check fastener tightness frequently.
- Use only Aldon® replacement parts.

## When Using as a Stop

- Car speed at impact must not exceed normal switching speed;  
**2 mph max.**
- Inspect stops for damage before and after each use.
- Do not power into stops with locomotive.

## When Using as a Chock/Block on Flat Track

- Use one pair of stops per car.
- Ease car up to stops. Do not impact.
- Apply hand brakes and chock rear wheels with Aldon® steel spurred chocks.

## When Using as a Chock/Car Stop on Grade

- 1% descending grade maximum.
- Use one pair of stops per car.
- Ease car up to stops. Do not impact.
- Apply hand brakes and chock rear wheels with Aldon® steel spurred chocks.

## Required Tools

- (2) 1-5/16" Wrench or 6/12pt socket
- (1) 1-5/8" Wrench or 4/8pt socket
- Spark-resistant hammer

# Installation

To install the stops, determine a suitable position free of rail defects, weld seams, and joint bars. If possible, position the stop between two ties instead of centered over a tie.

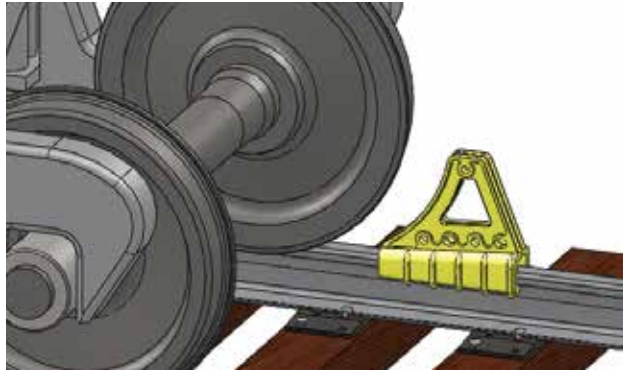
## 1. Disassemble the stops and ensure you have all of the components.

You should have the following:

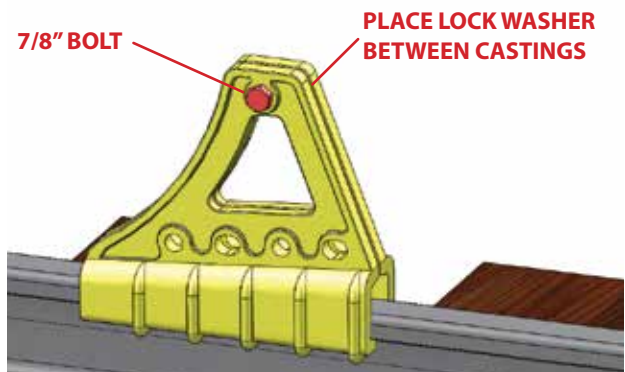
- |                             |                      |                       |
|-----------------------------|----------------------|-----------------------|
| (1) Right-side stop casting | (1) 7/8" bolt        | (4) 1" oval head bolt |
| (1) Left-side stop casting  | (1) 7/8" lock washer | (4) 1" lock washers   |
| (1) Wedge                   | (1) 7/8" hex nut     | (4) 1" square nuts    |

**If you are missing any of these components do not install the stops and contact Aldon Company, Inc. for replacement parts.**

**2.** Hold both halves of the stop over the rail head with the curved portion of the stop facing the wheel.

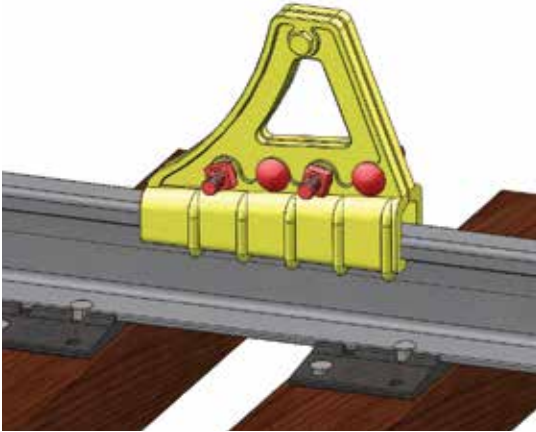


**3.** Install and hand tighten the 7/8" bolt, lock washer, and nut into the top hole of the stop. Note that the lock washer should be placed between the cast halves.

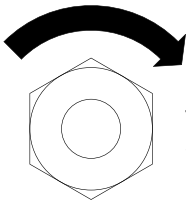


## Installation

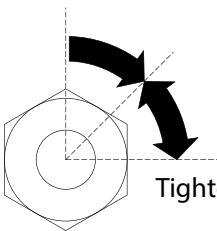
4. Install and hand tighten four 1" oval head bolts, lock washers, and square nuts into the bottom holes. Note that the oval heads fit into oval holes in the castings.



5. Wrench tighten all fasteners.



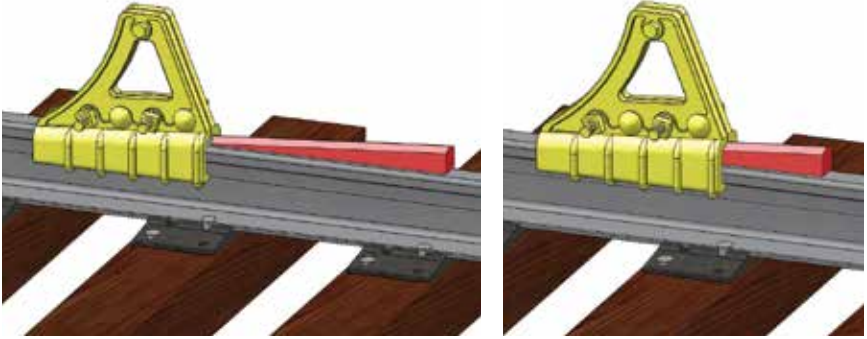
Tighten until spring lock washers are flat.



Tighten additional 45° -90°

## Installation

6. Install wedge from the back side of the stop and drive in with a suitable hammer. **Do not directly strike wedge with hard steel hammer.** Use a soft-faced or spark-resistant hammer.



7. Repeat steps 1-6 on the opposite rail, making sure to align both stops to one another.

**Car Stops are for use with up to 2 cars at a slow speed (2 mph max).**



**Provide ample space** between car stops and object to be protected.

**Use a signalman** to guide locomotive engineer as cars approach stops.

**Car Stops are sold in single units but should always be used in pairs.**

# Ways To Use Car Stops

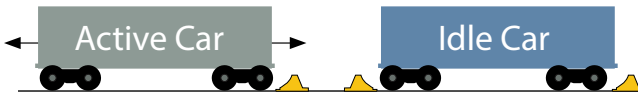
## 1. End-of-Track Stop

For car storage tracks and lightly used loading tracks.



## 2. Car Separation

Avoid contact between railcar being moved and nearby parked railcars. Provide ample distance between stops and car.

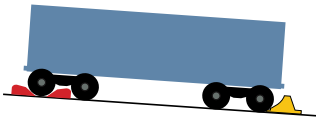


## 3. Backup for Chocks

Provide additional stopping protection if wheel chocks/brake can't hold car steady.



## 4. Chocking on Grades 1% Maximum Slope



1. Install one stop on each rail.
2. Ease car up against stops — no impact.
3. Apply brake and chock rear wheels.
4. For multiple cars use multiple pairs of stops (1 pair per car).
5. Provide adequate means to stop car movement when car stops are removed.

## Related Items

### CS-3X Locking Car Stop



**4016-05-L**  
**4016-06-R**

### Bumping Post



**4116-08** Standard  
**4116-09** Heavy Duty

### Two Way Flush Rail Car Stops



**4016-26**

### Stop Crew At Work Sign Plate



**6SCAW-B**

### Portable Clamp On Sign Holder for Railways



**4015-01**  
(Sign Plate Sold Separately)

### Severe Duty Cushioned Railcar Stop



**4016-06**



**Aldon Company, Inc. | 3410 Sunset Avenue | Waukegan, Illinois 60087**

PH. 847.623.8800 | FX. 847.623.6139  
www.aldonco.com | e-rail@aldonco.com

Follow us on



Printed in USA August 2023