

Aldon® Roadmaster Rolling Gauge Reader

Installation & Operation Instructions

4022-14



ALDON®
Safety on Track Since 1904

Aldon Company, Inc. | 3410 Sunset Avenue | Waukegan, Illinois 60087

PH. 847.623.8800 | FX. 847.623.6139
www.aldonco.com | e-rail@aldonco.com

Features

- Measure up to 2-inches gauge variation.
- Spring-action telescopic assembly expands and contracts as gauge changes.
- Easy to read gauge scale.
- Designed to roll through switches and frogs.



Handle



Roadmaster Rolling Gauge Reader – Scale Half



Roadmaster Rolling Gauge Reader – Lens Half

How to Install Your Gauge Reader on the Rail

1. Start by positioning the “lens half” of the track gauge reader on the rail. Wheel placement is important. One set of wheels should sit on top of the rail and the other against the gauge face.



2. Insert the “scale half” of the track gauge reader into the “lens half”. When inserting the scale half, the wheels on the lens half should be in contact with the rail head.



Installation

3. Continue inserting the scale half, making sure all twelve wheels on the lens half are positioned correctly on the rail head.



4. With the scale half fully inserted, position the wheels on the rail head. When installed properly, all wheels should be in contact with the rail head.



Installation

5. Remove the spring pin from the handle mount and install the handle. Replace the spring pin.



6. With the handle installed, check to make sure the track gauge reader rolls smoothly on top of the rail.



How to Measure Gauge Using Your Gauge Reader

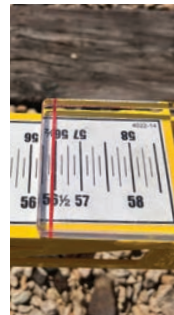
Each track gauge reader comes calibrated to measure 56-1/2" gauge. It is designed to measure up to 2-inches of gauge variation.



The large gauge scale and red lens mark make it easy to read your gauge measurements.

Once your track gauge reader is properly installed, start rolling it down the rail while watching the gauge scale.

As you continue to check the gauge, the track gauge reader will expand or contract providing you with an accurate measurement.



The Roadmaster Rolling Gauge Reader is designed to roll through switches and frogs

Switch



Frog



Have A Question?

“ASK ALDON”

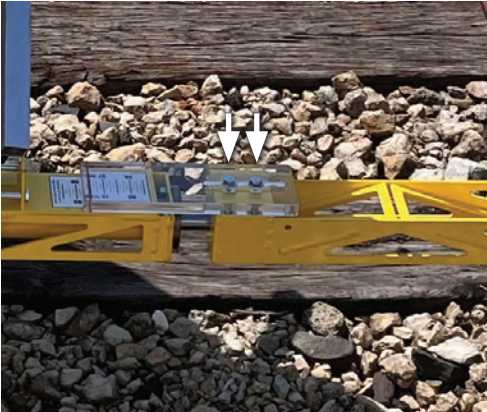
AskAldon@aldonco.com

How to Recalibrate Your Gauge Reader

If you need to recalibrate your track gauge reader, take a measurement from a section of track. Reinstall the track gauge reader where the measurement was taken.

Loosen the (2) 1/4 -20 bolts in the slotted area of the lens and slide the red mark on the lens to the desired measurement.

Retighten the bolts and make sure the gauge reading is correct.



Never over tighten the bolts. This could cause the lens to crack.

Contact Aldon Company, Inc. for replacement parts.

ACCESSORIES

Carrying Case



4022-24

Distance Counter



4022-20

RELATED ITEMS

Rolling Distance Counter

Take measurements in feet ranging up to 10,000 feet.
Use on exposed or flush rail.



4024-02

Digital Mismatch Gauge

Designed to measure rail ends for mismatch
on the gauge side and top side of rails.



4022-27

Stringline

Measure track curvature.



4024-03

RELATED ITEMS

Clamp-On Sign Holder

Clamps to rail head. Sign plate not included.



4015-01

Spot-Check Laser Gauge (Magnetic)

Measures track gauge to within 1/32" accuracy.



4022-26

Blue OSHA Signs

12"x 15" Engineer grade retro-reflective coating.



6SCAW-B

RELATED ITEMS

#23-A Adjustable Level & Gauge

Two piece 56"-58" Gauge Range.



4022-07

Track Inspector Tape Measure, 25 ft.

Magnetic tip allows hands-free measuring.



4124-316

Switch Point Lock

Use when closing a switch to traffic. Prevents worker from accidentally throwing the switch handle.

Padlock not included.



4023-43



Aldon Company, Inc. | 3410 Sunset Avenue | Waukegan, Illinois 60087

PH. 847.623.8800 | FX. 847.623.6139
www.aldonco.com | e-rail@aldonco.com

Follow us on



Printed in USA July 2023