



ALDON[®]

Safety on Track Since 1904



**Manufacturers of Rail Safety
and Track Repair Products**

Aldon Company, Inc. | 3410 Sunset Avenue | Waukegan, Illinois 60087

PH. 847.623.8800 | FX. 847.623.6139

www.aldonco.com | e-rail@aldonco.com

RAIL SAFETY RESOURCES

Your Reference for Railroad Safety

This Mini Catalog contains just the basics.
For our full line of products visit aldonco.com

If you need technical advice
email AskAldon@aldonco.com
or call us at 847.623.8800

Safety Posters

For Free Catalog or Posters Contact Us:

847.623.8800 | e-rail@aldonco.com | aldonco.com

INDUSTRIAL RAIL YARD HAZARDS

as revealed in OSHA accident reports of fatal and serious injury which occurred in industrial rail yards.

Rail yards are no place for inattention or distraction.
Workers need to develop situational awareness
and follow company safety regulations.



1
Caught between two rail cars when one car lurched forward.
Avoid climbing on taking a shortcut between cars.
Notify other workers when you are working with couplers, connecting brake hoses, etc.



2
Caught between a moving rail car and a dock or other tracking structure or equipment.
Be aware of limited clearance areas. Post warning signs where needed.



3
Caught between dock and rail car when car tipped sideways due to unbalanced load or poor cross-level condition of track.
Mind the clearance at all times.



4
Caught between two freight cars one stationary, the other moving.
Avoid walking between flares of rail cars.



5
Worker riding side of car is caught when there is insufficient clearance with doorway, rail car, or other object.
Never ride on rail cars.



6
Struck and killed by locomotive or freight car.
Never walk between rails or live near the track.



7
Worker slips and falls under a moving rail car.
Keep clear of rail car and remove tripping hazards (oil, debris, grease, protrusion, etc.).



8
Worker falls off car roof or car ladder.
Wear full protection gear when working on top of car. Use ladders only to adjust brakes.

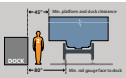
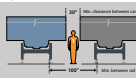


9
Worker falls through a car hatchway.
Wear full protection gear when working on top of rail cars.

WATCH YOUR CLEARANCES

Minimum track-to-track and track-to-dock clearances

1. Do not walk between flares of freight cars unless a fire train starts to move.
2. Lowered track and rubber pad treatment can cause cars to be tipped back. Stay out.



aldonco.com

Largest Selection of Rail Safety Products Anywhere!

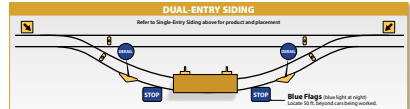
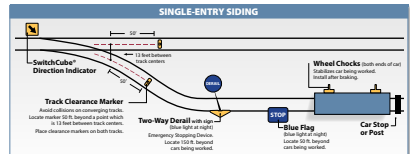
Aldon Company, Inc. | 3410 Sunset Avenue, Waukegan, Illinois 60087 | 847.623.8800 | e-rail@aldonco.com

INDUSTRIAL RAIL YARD HAZARDS
13" x 19" POSTER



BASIC SPUR TRACK SAFETY MAPS

What every industrial rail yard needs at a minimum.
Depending on specific site locations, other safety products may be needed.



FOR THESE SAFETY PRODUCTS AND MORE VISIT ALDONCO.COM

aldonco.com/switchcube

aldonco.com/clearancemarker

aldonco.com/derrails

aldonco.com/blueflag

aldonco.com/chocks

aldonco.com/carstops

ALDON COMPANY, INC. | 3410 SUNSET AVENUE, WAUKEGAN, ILLINOIS 60087 | 847.623.8800 | aldonco.com | e-rail@aldonco.com

BASIC SPUR TRACK SAFETY
11" x 17" POSTER

FEATURING NEW PRODUCTS FROM ALDON®

Two-Way Flush Rail Car Stops



4016-26

Designed for flush rail applications. Easy installation without cutting away your concrete.

Tool free installation and removal (simply drop-in / lift out).

Can stop one car at 3 mph, and up to three cars at 1 mph.

Steel mounting plates bolt directly to your concrete. Mounting hardware included.

Sold as single units. Use in pairs.

Flush Rail Car Stop Cart



4025-20

Designed for installing and removing flush rail car stops.

The cart allows one worker to easily maneuver car stops in any elements while only having to lift 30 lbs.

Digital Mismatch Gauge



4022-27

Designed to measure rail ends for mismatch on the gauge side and top side of rails.

Excessive mismatch will prematurely wear wheels, rail ends, joint bars, and bolts.

FEATURING NEW PRODUCTS FROM ALDON®

Hanging Tool Tray with Lid



4024-282

Our Hanging Tool Tray (With Lid) provides additional protection.

Keeps small tools safe and dry from the earth's natural elements when working on tank and hopper cars.

Tank Car Safety Gate



4024-283

Fits over gap in railing at top of tank car access ladder.

Formed aluminum panel drops over railing ends and locks securely in place with safety pins. Red reflective safety tape provides an additional safety measure.

Brake Stick with Magnetic Handle Short/Medium/Long Reach



User can tighten and release brakes, align car coupler knuckles, operate angle cocks, and re-set end-of-train warning devices.

The strong neodymium magnet allows you to attach the brake stick to any locomotive or car while performing other tasks.

4123-152 "Short" 24"-42" Magnetic Handle

4123-155 "Med." 49"-81" Magnetic Handle

4123-153 "Long" 59"-104" Magnetic Handle

Also available without magnetic handle.

FEATURING NEW PRODUCTS FROM ALDON®

Norfolk Southern Switch Target



Red-Green low stand target used for sidings and yard tracks, per NS print #640-968478.

4015-310



Red-White, 9" diameter target used on low stands for sidings and yard tracks, per NS print #640-009884.

Mounting clips/ hardware included

4015-311



Red-White, 14" diameter target used on New Century intermediate stands for main line track, per NS print #640-005783.

Mounting clips/ hardware included.

4015-312

Conrail Switch Targets



Yellow-White low stand target used for sidings and yard tracks, per Conrail print 73919-C. Mounting hardware included.

4015-313



Red-Green low stand target used for sidings and yard tracks, per Conrail print 73919-C. Mounting hardware included.

4015-314

Red-Green intermediate or high stand target used for main line track, per Conrail print 73917-C. Mounting hardware included.

4015-317

FEATURING NEW PRODUCTS FROM ALDON®

Union Pacific Switch Targets

These switch targets are made exactly to Union Pacific STD DWG 2100.

10" Diameter Red Target

Item No. 557-7713

10" Green Target

Item No. 557-7599



4015-325

18" Diameter Red Target

Item No. 557-7758

18" Diameter Green Target

Item No. 557-7603



4015-324

HWC Wheel Block & Handle



4012-16

Aldon's HWC Wheel Block & Handle makes chocking trailer tires easy.

No more bending or stooping.

The 30" high handle can be inserted on either side of the block.

Handle projects 20" beyond side of truck tire.

Walk-In Wheel Block with Flag & Handle



4012-17

Ergonomically designed "Walk-In" Wheel Block.

Aldon's ergonomically designed "Walk-In" Wheel Block w/Flag and Handle keeps trucks and trailers secure in one spot.

The 36" high flag and 30" handle can be inserted on either side of the block.

FEATURING NEW PRODUCTS FROM ALDON®

Ergonomic Chock & Sign Holder



4011-50



Keep your chocks and sign holders in one area without having to search your rail yard.

The holder has four brackets that allow you to store rail chocks or sign holders without bending or stooping.

Keeps products elevated away from snow, water and other elements. Avoid trip hazard.

Can easily be installed in track ballast or turf and asphalt by four heavy duty drive spikes.

Chocks and sign holders not included.

Doorway Barricade Sign Holder



4015-295

Mount in front of overhead shop doors to protect your employees.

The extra-long aluminum sign pole mount allows you to apply up to four padlocks for safety. Locks in up or down position.



Sign plate and padlock not included.

Magnetic Flex-E Form Sign Holder



4015-293

Mount in front of overhead doorways or use on any flush rail application to keep your employees safe.

When impacted, Flex-E Form sign holders are designed to spring back to an upright position.

Secured by three powerful neodymium magnets and removed in seconds with the Flex-E Form removal tool.

Will accommodate any size sign with adjustable U-bolt sign mounts.

Removal tool (4015-294) and signs sold separately.

WHEEL CHOCKS – Cast Steel with Spurs



Railcar brakes are not enough to hold a car steady.

Always chock both ends of car after brake is set.

Use chocks on flat track.

Aldon® steel chocks have replaceable rail-biting steel spurs that provide superior holding power & longer life. (Item # 6008)

Standard Chocks

Single Chock (11" handle)



- 4011-09** (D) Exposed Rail (shown)
- 4011-10** (D-1) Flush Rail

Double Chock (11" handles)



- 4011-03** (B) Exposed Rail (shown)
- 4011-04** (B-1) Flush Rail
- 4011-05** (B-2) Exposed Rail with tension clamp and padlock

Single Chock with Flag (28" handle)



- 4011-01** (A) Exposed Rail (shown)
- 4011-02** (A-1) Flush Rail

Double Chock with Flag (28" handles)



- 4011-06** (C) Exposed Rail (shown)
- 4011-07** (C-1) Flush Rail
- 4011-08** (C-2) Exposed Rail with tension clamp and padlock

Stay-Clear Hi-Visibility Chocks

Single Chock with Flag (44" handle)



- 4011-14** Exposed Rail (shown)
- 4011-15** Flush Rail

Double Chock with Flag (44" handles)



- 4011-16** Exposed Rail (shown)
- 4011-17** Flush Rail

WHEEL CHOCKS – Urethane



Hold railcars steady under high-vibration and dynamic loading or unloading.

Spark-Proof and resistant to most chemicals.

Never get stuck under a wheel.

When it's time to move the railcar, just roll right over the chock with the power of the locomotive.

Chocks mold to wheel and rail for superior holding power.

Ribbing squeegees out water and dirt from rail surface to increase holding power.



[See the chock tests video at aldonco.com](http://aldonco.com)

Rail Sizes 90 -142 lbs./yd. | Wheel Diameter 26" - 48"

Magnetic Chock Holder

Heavy Duty Double Chock



4011-40 Exposed Rail (shown)
4011-41 Flush Rail

Heavy Duty Single Chock



4011-42 Exposed Rail (shown)
4011-43 Flush Rail



4011-46 Rare earth magnet will not slip.

Additional Wheel Chock Products

Car Stopper Wheel Chock



Bring slow-moving car to a stop by thrusting urethane wedge several times in front of car wheel.

4011-11 Wedge with 5' PVC Handle
6003 Replacement Wedge

Nine Lives Wheel Wedge



Chock idle railcars on storage tracks.

Do not use to chock cars being loaded or unloaded.

4011-18

SIGN AND FLAG HOLDERS Sign plates not included (except where noted)

Sign Holders

The Mouse Trap



Foot-operated hinged sign holder raises and lowers sign. Sign plate can be installed to fall face up or face down. Lockable. Lock not included.

4015-95

Magnet Base Sign Holder



Powerful rare earth magnets hold sign in place, even in high wind.

Flush or exposed rail track.

4015-54

Spur Track Guardian



Spur Track Guardian Package

1. Hinged Sign Holder (hand-lifted or foot-operated).
2. Blue sign, your choice of wording.
3. Flashing Blue Solar Light. 6-LED light. Shock-proof and NEMA-4X rain and dust proof. Gravity switch (light turns off at 45° angle).

4015-93 Hand-lifted hinged holder, sign plate, solar light.

4015-122 Foot-operated sign holder, sign plate, solar light.

Flashing Blue Solar Light also sold separately.

4015-135



Spike Down



Base is spiked to tie. Sign holder folds down in either direction. Two track spikes included. Lockable. Lock not included.

4015-06

Spear Point



Hammer 12" long spear point into the ground using the included hammer punch.

4015-188

Flag Holders

Rail Clamping



Steel holder clamps to rail head. Twin sockets for 7/8" dowel staff.

4015-23

Magnetic



Wind-proof magnetic base for exposed or flush rail. Twin sockets for 7/8" dowel staff.

4015-55

Flags for all holders are sold separately.

Rail Clamp-Ons

Clamp-On



Steel holder.
Clamps to rail head.
Easy on, easy off.

4015-01
Non-Locking
(shown)

4015-07
Locking
Padlock included.

The Ultimate in Blue Flag Protection

Car Coupler Padlock and Sign Holder



Coupler lock shaft fits flag hole found on all railway couplers. The steel "cage" in the middle of the shaft fits inside the knuckle of the coupler, thus preventing a locomotive or other railcar from coupling to the stationary car.

Padlock included. Sign plate not included.
4015-241

Aluminum



Double roll bar for stability.
4015-52

Hurricane-Proof



Steel holder with padlock. Withstands 75 mph wind.
4015-10

Magnetic Rail-Top Sign Holder



Rare earth magnet keeps holder in place on the rail.



Accepts 12" x 15"
or 18" x 15" sign plates.
4015-230

Car Coupler Sign Holder



Gooseneck handle fits into hole in coupler. Sign plate and padlock not included.

4015-03

SIGNS AND NYLON FLAGS

Standard Blue Flags

Aluminum .080" x 12" x 15". Engineer grade retro-reflective. Single sided.



4015-18-B



6STOP-B



6SAFE-B



6SCC-B



6STCC-B



6SCAW-B



6SMAW-B



6SDEAIL-B



4015-18-R



6SMAW-R



6STOP-R



6SCAW-R

Enhanced Blue Flags

Aluminum .080" x 18" x 15". Engineer grade retro-reflective. Single sided.
Fits any existing Aldon® sign holder.



7SMAW-B



7SCAW-B



7SEW-B



7SCC-B



7STOP-B



7STCC-B



7SDEAIL-B

Clearance Signs



Foul Point
12" x 15"
4015-37



Close Clearance
18" x 24"
4115-42

No Clearance
48" x 6"
4115-37

N
O
C
L
E
A
R
A
N
C
E

Nylon Flags

Nylon Flags with Wood Dowel Handle
12" x 15", 18" wood dowel staff.



- 4015-91 Orange
- 4015-92 White
- 4015-21 Yellow
- 4015-22 Green
- 4015-20 Red
- 4015-12 Blue
- 4015-120 Yellow/Red

Locomotive Cab Signs

Magnetic Signs

Aluminum sign with wind-resistant rare earth magnetic tab.
Printed on both sides (reflective lettering).
Other wordings/colors available.



8½" x 15"
4015-98



8½" x 15"
4015-96

Locomotive Handrail Blue Flag Holder

Sign holder easily bolts together. (7 feet tall)
Hooks to handrail near cab.
Two-sided sign plates
12" x 15" x .080" aluminum.
"STOP MEN AT WORK" (blue) furnished.
Specify if another wording is desired.

4015-327



Crossing Signs

Cross Buck (Hi-Intensity)



2 blades when assembled form 34" x 34" span. Each blade is .080" aluminum 9" x 48". (MUTCD #R15-1)
4015-74

Bracket



Aluminum bracket for 2-3/8" diameter pipe. Sold in pairs. Use in pairs. (One pair per Cross Buck set)
4015-199

Aluminum bracket for 4" diameter pipe. Sold in pairs. Use in pairs. (One pair per Cross Buck set)
4115-96

R.R. Advance Warning (Hi-Intensity)



30" diameter (MUTCD #W10-1)
4015-76

STOP 30" Hi-Intensity, Retro-Reflective



30" Octagon (MUTCD #R1-1)
.080" Aluminum
4015-75

STOP 24" Engineering Grade



24" Octagon Stop Sign
.080" Aluminum
4015-196

Blank Red (Stop)



24" Square .080" Aluminum
Scotch-lite reflective facing.
4115-44

Derail

Intermodal



12" x 15"
6DERAIL-O

Vertical



36" x 6"
4115-41

Red Vinyl Magnetic Markers



Reflective red vinyl marker with magnetic backing. Place on web or base of rail.
SIZE: 2.75" x 12"



4015-257

SAFETY LIGHTS AND SIGNALS

Solar Powered Flashing Lights

Flashing Solar Blue Light w/Bracket

Solar-powered blue flashing light includes mounting bracket to attach to any square or flat sign holder. Shock proof and NEMA-4X rain and dust proof.
Gravity switch (light turns off at 45° angle).
Specify standard or derail bracket when ordering.
4015-135



Magnetic/Bolt-On Surface Mount

6 LED light flashes 60 times per minute. Visible for a mile. Operates 8 consecutive nights without recharging.



Fully recharges with 2 sunny hours or 8 cloudy hours.
External on-off push button conserves battery. Gravity switch disconnects light when light is turned to 45°.

Flashing Solar Combo Lights w/Bracket



Flashing blue light with flashing white light to illuminate the sign plate.

Brilliant LED lights are visible for over a mile. Shock-proof and NEMA-4X rain and dust proof.
Gravity switch (light turns off at 45° angle). Shown with magnetic base sign holder (4015-54 and 6SMAW-B sign). Sold separately.
4015-205

Blue

4015-25 Magnetic
4015-31 Bolting

Red

4015-33 Magnetic
4015-34 Bolting

Amber

4015-35 Magnetic
4015-57 Bolting

Clear

4015-58 Magnetic
4015-59 Bolting



Magnetic Bracket



Bolt-On Bracket

Car Side Magnetic Solar Light



Flashing Blue Light fully recharges with two hours of sunlight or eight hours of cloudy skies. On/Off button. Gravity switch turns light off when tilted 45° or more.

4015-237

Magnetic Base Solar Lantern



4015-180

60 lb. pull magnet keeps lantern secure. Operates up to 22 nights on full battery charge. Use in upright position. Turns off when lantern is titled 45° or more.

SAFETY LIGHTS AND SIGNALS

Battery Powered Lights

Clip-On / Stick-On Lights

Clip to vest or belt or use magnetic base.
Uses single "D" cell battery (not included).
Height 4-1/2" tall.

Xenon Bulb

4015-191 Blue

4015-192 Red

LED Bulb

For greater brilliance and
reduced battery draw.

4015-194 Blue



Magnetic Mini-Light

Magnetic base/steel clip for all sign
holders, except 4015-02, 4015-03,
4015-04, 4015-241, 4015-188,
4015-230.

4015-32

Uses CR2032 Coin Battery (included).



Pocket Lights

Small enough to slip into
your pocket. 4 LED light
visible up to 2 miles.
Magnetic base and
belt clip. Uses two AA
batteries (not included).

4115-115 Red

4115-114 Blue

4115-117 Amber



Flashing Blue Light

7 inch diameter Lexan lens.
Uses two 6-volt batteries
(not included). Tamper
resistant switch (no button).
Pin inserted into hole
opening on back turns light
on and off.

4115-04



LED Barricade Lights



7 inch diameter. Lexan lens uses two 6-volt
batteries (not included). On-off switch and
photo-electric cell. Flashes 60 times/min.
Battery case bolts to any sign
holder or Aldon® Chock Light Bracket.

Bolt-On Barricade Light - Blue

For all sign holders, except
4015-03 and 4015-04
Uses two 6-volt batteries
(not included).

4115-01



Magnetic Barricade Flasher - Blue

100# Pull magnetic base.
Uses two 6-volt batteries
(not included).

4115-13



Railcar Motion Detectors

Warning Light and Horn



4024-08

Mounts in the
hole on car
coupler. Car
movement
activates
flashing light
and horn. Uses
8 AA batteries (included).
Enclosure is rain-proof
and dust-proof.



DERAILS - Hinged

For rail sizes 90-142 lbs.

One-Way Left Throw Derail



Suitable for all locomotives and freight cars.
10 mph or less

4014-01
(Manual Lift Sign)

One-Way Right Throw Derails



Suitable for all locomotives and freight cars.
10 mph or less

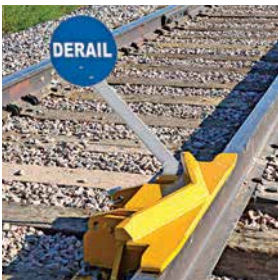
4014-02
(Manual Lift Sign)

Two-Way Freight Car Derail



Suitable for freight cars and 4-axle locomotives.
5 mph or less
Not for use with 6 axle locomotives.
4014-03
(Manual Lift Sign)

Two-Way Locomotive Derail



Suitable for 6-axle and 4-axle locomotives and freight cars.
10 mph or less
4014-18
(Manual Lift Sign)

One-Way Left Throw Derail



Suitable for all locomotives and freight cars.
10 mph or less

4014-10
(Pop-Up Sign)

One-Way Right Throw Derail



Suitable for all locomotives and freight cars.
10 mph or less

4014-12
(Pop-Up Sign)

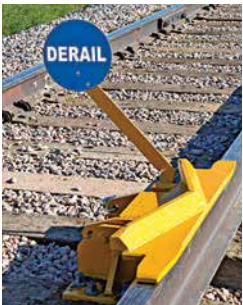
Two-Way Freight Car Derail



Suitable for freight cars and 4-axle locomotives.
5 mph or less
Not for use with 6 axle locomotives.

4014-14
(Pop-Up Sign)

Two-Way Locomotive Derail



Suitable for 6-axle and 4-axle locomotives and freight cars.
10 mph or less

4014-20
(Pop-Up Sign)

SaberTooth® Portable Derail Protection

Formed-steel housing • Tool free installation • Tie-biting anchor hooks. U.S. Patent #7,753,317



Safety Hook. If brace bar notch should slip off tie plate, hook bites into tie. Prevents derail from slipping.

Single-Direction



For all locomotives
and all freight cars.
Rails 90-142 lbs./yd.

10 mph or less

4014-06-S
Left Throw (shown)

4014-07-S
Right Throw

Two-Direction



**For all locomotives
and all freight cars.**
Rails 100-142 lbs./yd.

10 mph or less

4014-08-S
Patent pending.

**For 4-axle
locomotives and
freight cars.**
Rails 100-142 lbs./yd.
5 mph or less
4014-09-S (shown)

Replacement Derail Sign Plates

Reflective 10" diameter round,
.080" aluminum. Printed on both sides.



4015-71 Blue



4015-72 Red

MoonSign



18" diameter White
retro-reflective facing
2 sided.

Sign plate fits any
Aldon® hinged or
portable derail sign
holder.

4015-185

Padlocks

For derails, switch stands, and other rail
equipment.

4124-97

Leaf Brass



a.

4124-318

Solid, Plated
H-11 Style



b.

4124-319

Solid, Plated
H-10 Style



c.

Shackle Dimensions

| | Diameter | Inside length | Inside width |
|----|----------|---------------|--------------|
| a. | 3/8" | 1-1/32" | 15/16" |
| b. | 7/16" | 1-5/8" | 3/4" |
| c. | 7/16" | 11/16" | 3/4" |

TRACK SWITCH SAFETY – Switch Cube® Indicator

Aldon® Switch Cube® Indicator



Patent Applied For

A BIG IMPROVEMENT IN SWITCH TARGETS.

Workers can see at a glance how a switch is lined with no guesswork.

Cube can be adjusted square to rail.

[See video on website for more details.](#)

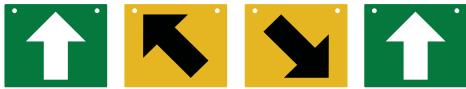


Facing Point



Trailing Point

Double Yellow (Standard)



4015-164 Left Turnout



4015-165 Right Turnout

Red Stop (Standard)

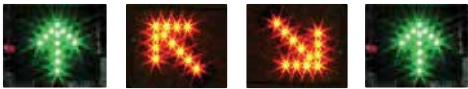


4015-160 Left Turnout

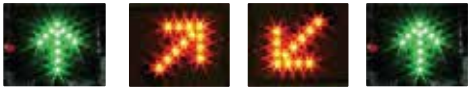


4015-163 Right Turnout

Double Yellow (Solar Powered Illuminated)

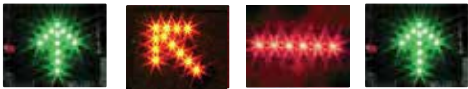


4015-164-I Left Turnout

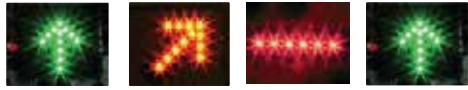


4015-165-I Right Turnout

Red Stop (Solar Powered Illuminated)



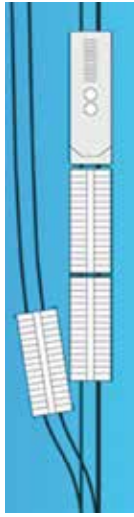
4015-160-I Left Turnout



4015-163-I Right Turnout

Additional Switch Cube® indicator options at [aldonco.com](#)

CLEARANCE POINT MARKERS



Don't let this happen at your track switch.

Help prevent collisions with passing traffic by installing Track Clearance Markers on both converging tracks. Bright colored fade-resistant urethane cone or slab markers are visible day and night.

Urethane Markers (Exposed Rail)



Urethane clearance markers tell workers how far they can park a railcar near a switch.

4015-144 Yellow Exposed Rail

4015-242 Orange Exposed Rail

Urethane Markers (Flush Rail)



Low-profile bright yellow urethane marker to indicate parking limits on tracks encased in concrete or asphalt.

Marker is 36" long by 6" wide and 1" thick.

4015-146 Asphalt (12" drive spikes)

4015-156 Concrete (lag bolts and anchors)

Magnetic Rail Web Markers



Fits rails 90-142 lbs./yd. 2.375" x 12". Flexible plate with magnetized back and engineer-grade reflective yellow facing.

4015-248 Blank

4015-255 Secure Cars

4015-256 Check Clearance

Other Ways to Use Track Clearance Markers



End-Of-Track Warning



Advance Derail Notice



Loading/Unloading Zones

HOPPER CAR GATE AND HATCH OPENERS

Gatemaster Torque Wrench



For tough-to-open gates and multiple gates to open

Gatemaster I

The output torque is sustained until the gate opens or the operator releases the torque.



4020-05

Gatemaster II

Adding an “assistant” torquing unit to the Gatemaster reduces input handle effort needed to achieve full 3,200 lb · ft output.



4020-06

Hatch Key® Pry Bars

Save your back and your fingers. Stubborn hatch covers yield to the leverage in our specially shaped bars.

Standard Duty



Caution: Worker should be secured to fall protection cable while using Hatch Key® Pry Bar.

4020-16 Standard Duty

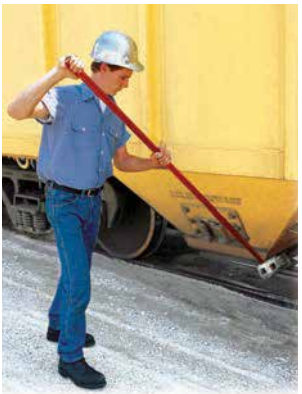
Heavy Duty



Caution: Worker should be secured to fall protection cable while using Hatch Key® Pry Bar.

4020-17 Heavy Duty

Turning Bar



Six feet long and made of alloy steel, with an angle at one end to clear the side of car.

Operator should not jump or stand on the bar.

4020-03

Brake Sticks



No need to climb the ladder to work the brake.

High quality Brake Stick telescopes and locks. User can tighten and release brakes, open car coupler knuckles, operate angle cocks, and reset end-of-train warning devices.



4123-104 "Short" 24"-42"

4123-154 "Med." 49"-81"

4123-105 "Long" 59"-104"

Also available with magnetic handle.

Manual Car Mover



The tried and true way to move one railcar short distances. Car mover multiplies worker's downward handle pressure to lift and nudge the wheel slightly forward.

Use on flat track only.

Do not use car mover foot as a wheel chock.

4017-01 Mover with 54" Hardwood handle

4017-02 Replacement handle

Car Stops

- Rail size 80 - 142 lbs. Limit 1-2 cars.
- Flat track only at a slow speed 2 mph max.
- Exposed rail. (Flush Rail Contact Us)
- Provide ample space between car stops and object to be protected.
- Use a signalman as cars approach stop or post. Repeated impacts will weaken stops and posts.

CS-2 Car Stop



Portable for temporary use on exposed rail. Wedge secures two-piece stop to rail. Use in pairs.

4016-03

CS-3X Locking Car Stop



Folds to outside of rail.

Permanent installation on exposed rail. Use in pairs.

4016-05-L Left

4016-05-R Right

CS-4 Severe Duty Type



Recommended for spur tracks where more protection is needed than a conventional car stop can provide. Use in pairs.

4016-06

RERAILERS

Straddle-Type Freight Car Rerailers



The most practical design. All wheels are rerailed with one placement of rerailers.

Rail Size 90-142 lbs./yd.

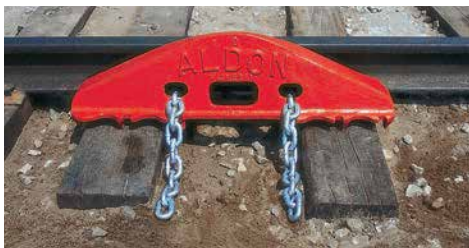
- 4018-01-L (H-7) Left
- 4018-01-R (H-7) Right

Rail Size 70-110 lbs./yd.

- 4018-02-L (E-6) Left (shown)
- 4018-02-R (E-6) Right (shown)

Chain and hook holds rerailers securely to rails.

“BIG RED” Rerailers for Heavy Railcars



Cast in high strength alloy steel, these double-end rerailers can carry the weight of heavier railcars. Used in pairs (one inside, one outside) and secured by chains to the rail.

Rail Size 100-131 lbs./yd.

- 4018-12-I Inside
- 4018-12-O Outside

Rail Size 132-152 lbs./yd.

- 4018-13-I Inside
- 4018-13-O Outside

Safety Chain with Hook

Sold individually.
Need 2 chains per rerailer.
4018-09

“Burlington” Style Freight Car Rerailers



Double-ended “Burlington” style rerailers are locked to the rails by clamps and wedges and will not slip or kick out during rerailing. One “Inside” and one “Outside” make a pair.

Rerailers are reversible in direction and exchanged in position to suit different derailed wheel situations. For use with standard size cars and locomotives.

Rail Size 100-142 lbs./yd.

- 4018-04-I Inside
- 4018-04-O Outside

BOX CAR DOOR OPENERS

Easy-Slide® Door Opener

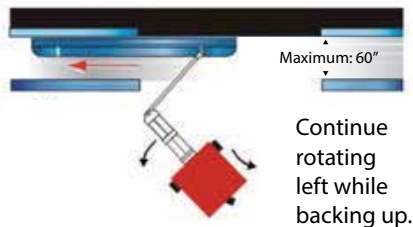


4020-13

Open box car doors from inside doorway of dock.

Use power of forklift and compound leverage to open and close car doors. No damage to car door or forklift. Steel frame fits over paired fork blades up to 5" wide. Steel pivot arm can stretch 60" beyond frame to reach car door. Pincer hook on pivot arm engages car door pull-tab.

U. S. Patent #8,568,078.

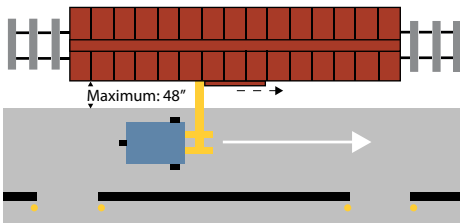


Box Car Door Openers are Custom Made. Please Request a Sizing Form.

ALDOR Boxcar Door Opener



Force is parallel to car door so no damage is done to forklift or car door. Forklift and operator remain safely out of the way of the door at all times.



Adjustable-Length ALDOR — Steel

4020-02 (shown)
Fits fork blades up to 5" wide
For wider blades contact us.

4020-20 Reversing Chain.

TRACK INSPECTION

Roadmaster Rolling Gauge Reader



Rolls through switches and rail crossings without stopping.

Continuous gauging with 2" clearance above rail.
Easy rolling thanks to 24 steel roller bearings which ride on the top and on the gauge side of the rail.



Read gauge changes as you walk.
Reversible push handle allows change of direction.

4022-14

Track Gauge Spreader



Grabs rail head or base to pull or push rails into desired gauge.

One end of the head-of-rail Spreader model has a double jaw, one of which is offset to lift Spreader above switch point or heel block.



Gauging range 16 inches.

4023-50 Head of Rail (Non-Insulated)

4023-51 Base of Rail (Non-Insulated)

4023-52 Base of Rail (Insulated)

Gauge Control Rods



A pair of iron jaws at each end of the double-ended gauge rod grip the rail base to hold the rails to gauge and keep the rails upright against wheel pressure. Gauge rods are not painted yellow. Images are colorized for clarity.

4127-01 (Single End Non-Insulated)

4127-01-I (Single End Insulated)

4127-02 (Double End Non-Insulated)

4127-02-I (Double End Insulated)

Adjustable Aluminum Level & Gauge



Measure two inches of gauge variation to within 1/16". Slide rule action and large type scale.

Gauge setting can be locked with thumb screw. Measures cross elevation from 1" to 7" with 1/8" accuracy.

Two piece 56" - 58" Gauge Range
4022-07

Fixed Gauges & Track Levels

Standard gauge or any custom gauge desired. Imperial or Metric.



Aluminum Track Gauge
4022-02



Aluminum Track Level
4022-01



Combination Aluminum Level/Gauge
4022-03



Steel Pipe Gauge
4022-05

"SPOT-CHECK" Magnetic Laser Gauge



Aluminum bracket with two rare-earth magnets holds Spot-Check on rail. Two adjusting screws raise or lower laser beam 20° with laser range of 135 feet. Screen displays current and previous readings.



4022-26

Stringline Rail Curve Measuring Tool



4024-03

Measure track curvature or visually judge the straightness of straight rail. Steel paddles lock to rail head.

The custom 12" ruler measures the space between the rail head and the red-marked midpoint of a 62' cord.

Each inch of space between rail and string equals one degree of curvature.

Accuracy of measurement is +/- 4%.

TRACK INSPECTION AND MAINTENANCE

Rail Pull / Re-Gauger



Bring rails back into gauge after a derailment so rerailing can proceed. Cars can temporarily pass over Rail Pull saddles until rails can be re-gauged. Solid formed alloy steel plate.

No welded joints to crack.
4023-74



Wrench and Socket Kit for Rail Pull

1/2" square drive ratchet wrench and 1" 8-point impact socket.

4023-78

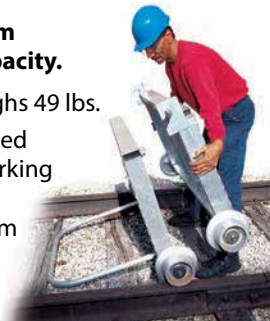


Two-Piece Miracle Cart

Welded Aluminum
5,000 lb. load capacity.

Each cart half weighs 49 lbs.
48" square expanded aluminum grid. Parking brake. 6" diameter insulated aluminum wheels.

4025-03



Two-Piece Steel Push Cart



Track Bolt Ratchet Wrench

Handle is 38" long, with 1" square drive.

1" Square Drive Sockets

4124-140 1-5/16" 8 pt.

4124-143 1-1/2" 8 pt.

4124-144 1-9/16" 8 pt.

4124-147 1-3/4" 8 pt.

4124-149 1-7/8" 8 pt.

Wrench only:
4123-112



5,000 lb. capacity.

Each cart half weighs 93 lbs.

53" x 48" deck is non-skid expanded steel.

6" diameter insulated aluminum wheels.

Parking brake.



4025-02

TRACK INSPECTION AND MAINTENANCE

Switch Maintenance

GLIDEX Liquid Switch Stand Lubricant

Not soluble in water: Resists rain and snow. No build-up of dirt or dust on switch stand moving parts. Non-toxic synthetic ingredients. GLIDEX can be brushed, sprayed, or poured on switch points, throw rods, etc. 5-gallon bucket.

4123-128



Track De-Icer

Prevents snow and ice from clogging rail and switch points. Non-flammable and dilutable. Sold in 5 gal. containers.

4123-129



Sprayable Graphite Grease

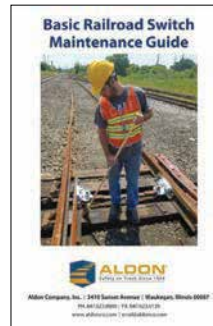
Keeps switch points and switch rods from rusting and sticking. Flammable material- shipping regulations apply. 4 gals. /case.



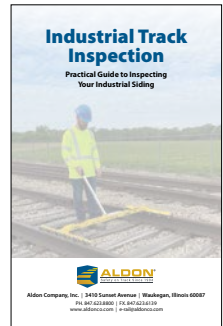
4124-106

Only ships by motor freight under hazmat class.

Inspection & Maintenance Guides



Railroad Switch Maintenance



Industrial Track Inspection

Information to keep your industrial siding running smoothly and safely.

Request your free copy at **Aldonco.com**

Applicators

Lubrication Spray Tank

Keep all moving parts of a switch operating smoothly. Spray tank holds 3 gallons of lubricant.

4123-79



Lubrication Brush

46" handle and long-bristle poly brush.

4123-80



SPILL CONTROL / CAR SHAKERS

Railroad Spill Containment Pan



Polyethylene pan is placed on rail beneath tank cars and hopper cars. The pan holds up to 50 lbs. of drips as hoses are connected. Do not use with acids.

4124-29 With Drain Holes

4124-30 Solid Pan

Blue Boat Spill Pan



For plastic pellets and other materials. Molded polyethylene pan is 29" long x 14" wide by 10" high. Screened drain in bottom lets liquids pass through.

4124-310

Absorbent Track Mat



Provides absorbency and drip protection under railcars for a wide variety of petroleum-based products.

4123-148 59" wide roll (Inside rails)

4123-149 Set of two 19" wide rolls
(Field side of rails)

Pneumatic Piston-Type Car Shakers



The piston shaker has a wedge-end which fits all standard covered hopper car side brackets.

4126-01 PCS-3 Car Shaker
(Dry, granular materials)

4126-02 PCS-4 Car Shaker
(Sticky, damp materials)

Air Brooms



Better than a push broom. Clean up dry spillage and unclog hopper chutes with a jet of high-pressure air.

4124-212 Barrel length 48"

4124-213 Barrel length 36"

4124-214 Barrel length 60"

Rotary Pneumatic Car Shaker

Mounts easily to most standard wedge brackets on covered hopper car pockets. Recommended for potash (fertilizers), corn, wheat, soybeans, distilled dried grains, salt, coke, crushed stone, and sand gravel (up to 1/2").

4126-06 Rotary Pneumatic Shaker w/
Wedge & Handle



Switch Protection

Switch Point Protector

Protect switch points to reduce derailments.

The sharp ends of switch points are vulnerable to wheel battering.

If a switch point tip gets mangled, it will not lie flat against the running rail. Any gap between the switch point and the running rail will allow a wheel flange to slide in, "pick the point" open, and derail.



For Industrial Spur Switches

To order: Identify your rail size and section.

If your rail size is not shown, contact us.

4123-77

AREMA: 100 LB
ARA-A: 100 LB
AREMA: 110 LB

4123-77-A

AREMA: 112 LB,
115 LB, 119 LB

4123-77-B

AREMA: 131 LB,
132 LB, 136 LB
140 LB
AB: 141 LB
NYC: 127 LB

4123-77-C

ASCE: 85 LB, 90 LB
ARA-B: 100 LB
PS: 100 LB

4123-77-D

ASCE: 100 LB

4123-77-E

NYC: 105 LB
PS: 130 LB

4123-77-G

AREMA: 133 LB

4123-77-H

AREMA: 141 LB

4123-77-I

ARA-A: 90 LB

4123-77-J

AREMA: 130 LB

Switch Security

Switch Point Clamp and Lock

(Rail Size 85-142 lbs./yd.)

Fine screw threads and 3-point handle hold switch point tight against running rail to within 1/32".

Use when making switch stand adjustments. Protect track repair crews and rip track workers.



Padlock not included.
4023-07

Switch Point Lock

(Rail Size 85-142 lbs./yd.)

No threads to rust. Sliding clamp locks in place with padlock. Use when closing a switch to traffic and to prevent a worker from accidentally throwing the switch handle.

Padlock not included.

4023-43



Safety Hook for Switches



Takes the place of a padlock to prevent unauthorized movement of a switch.

Formed steel hook with stainless chain can be bolted to tie.

Lag screw included.

Meets FRA Regulation 218.103 (Switch Stand Securement).



4024-303

TRACK TOOLS

Spike Handling

Claw Bar



4123-04

Spike Lifter



4123-16

Sledge Hammer



4123-94

Spike Maul



4123-17

Tie & Timber

Tie Plugs



4124-14

Tie Plug Punch



4123-84

Adze w/Handle



4123-01

Nipping Bar



4123-90

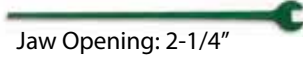
Rail Handling

Rail Fork



4123-13

Wrench, Single End



Jaw Opening: 2-1/4"

4123-37

Wrench, Double End



Jaw Openings:

1-1/2" and 1-11/16"

4123-25

Track Punch, Round Pt.



4123-91

Track and Switch Brooms

"Ice Breaker" Aluminum



Unbreakable aluminum handle with chisel end, poly-bristles.



4023-21

Standard Wood Handle

Wooden handle with chisel end, poly-bristles.



4023-19

Magnetic Tip Track Inspection Tape Measure

Magnetic tip allows one worker to quickly check track gauge.

Color coded overlay scale gives tolerance for out-of-gauge track and cross-checking guard rail and frog spacing for Class 1 through Class 5 track.



4124-316 25 ft. Tape



55 56 57 58

Rail Benders 60 lb. – 141 lb. Rail

AL-200-H Hydraulic Rail Bender



30-Ton Bender for conventional strength rail.
Use for switch point pockets and rail repairs. Single hook bender frame. Safety chain secures ram/pump unit to frame.

4021-01

AL-200-S Screw-Jack Rail Bender



25-Ton Bender for conventional strength rail.
Use for switch point pockets and rail repairs. Single hook bender frame. Safety chain secures ram/pump unit to frame.

4021-02

Rail Benders 25 lb. – 85 lb. Rail

Curve mine rail and make other rail repairs.
V-shaped bender frame available with 25-ton hydraulic ram-pump or 50-ton ram with remote pump.

25-Ton Hydraulic Ram



| Part No. | Ram Size | Rail Size |
|----------------------|----------|-----------|
| 4021-06 (2-H) | 25-tons | 60-70# |
| 4021-07 (3-H) | 25 tons | 25-60# |

50-Ton Hydraulic Ram



| Part No. | Ram Size | Rail Size |
|------------------------|----------|-----------|
| 4021-09 (2H-50) | 50-tons | 60-85# |
| 4021-10 (3H-50) | 50-tons | 25-60# |

RAIL SKIDS (SKATES)

Industrial Service (Rail Size 90-141 lbs./yd.)



A light-weight skid, useful as a wheel chock on industrial sidings, and to alert an engineer when pushing a string of cars into a dead-end string.

4016-09 S-78 Rail Skid



For light to average weight railcars, use as a car stopper and wheel chock.

4016-10 S-61 Rail Skid

Railroad Service (Rail Size 100-141lbs./yd)

For industrial use, skid can be used to stop 1 to 4 freight cars moving at 1 to 2 mph on flat track only. For exposed rail only, skid will not lie flat on rail encased in pavement. Features deep "pocket" to capture car wheel. High back keeps wheel from jumping over.

4016-12 S-87 Rail Skid (Yellow)

4016-12-O S-87 Rail Skid (Orange)



Chocking Skids for Flush/Exposed Rail

Locomotives

Locomotive air and hand brakes must be applied as soon as wheel has mounted skid. The skid alone will not hold a locomotive steady. Not recommended for grades, as skid may not hold the load.



Flush Rail Locomotive Chocking Skid
4016-09-L



4016-09-R



Exposed Rail Locomotive Chocking Skid
4016-13

Freight Cars

Handy for chocking freight cars on flat track, it may be necessary to chock the other end of the car with a wheel chock. Not recommended for grades, as skid may not hold the load.



Flush Rail Left
4016-22-L



Flush Rail Right
4016-22-R

T-Wrenches for Sockets



T-Wrench image is colorized for clarity.

Useful where 200 lb · ft or less of torque is needed to loosen or tighten manway cover bolts.

Square drive 1 inch.

4024-157 Steel

4024-195 Aluminum (Spark Resistant)

Tank Car Sockets

1" square drive

4" bolt clearance. Bronze or Steel.

Available in various nut sizes, hex or square.

Steel



Max Torque Rating
1500 lb · ft

Bronze



Max Torque Rating
500 lb · ft
Not for impact use.

See website for sizes offered.

Tank Car Wheel Block

High-security wheel blocking. Clamps grip rail head through wedge action.



Use on flat track only.

Do not use for impact stopping.

Use one chock at each end of car after brake has been applied.

4016-01 (CB6-A) For rails 60-104 lbs.

4016-02 (CB6-B) For rails 105-175 lbs. (shown)

Tank Car Pry Bars



Maximum leverage to open heavy manway covers.

Five foot handle. Rocker base. Much better than using a crowbar!

4020-18 Steel

4020-19 Aluminum (Spark Resistant)

TRUCK DOCK SAFETY – Trailer Stabilizers

Aldon® Guardian® Trailer Stabilizers Slip Easily Under Nose of Trailer

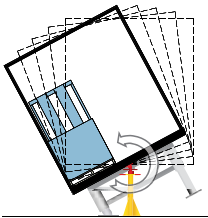


Why bother with heavy, clumsy ratchet screw jacks to support trailer front ends?

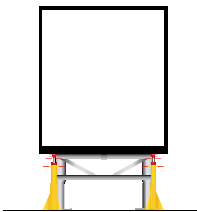
Slip two 45" tall Aldon® Guardian® Trailer Stabilizers under the nose, then crank the landing leg handle a few times to make contact.

When ready, crank again to free the stabilizer.

Always use two stabilizers at the front of each trailer. Trailer must be secured with dock lock or wheel chocks.



Bad Support



Good Support

Fixed Height (45")



Light weight—no need for wheels
No need for a Ratchet Screw
Maintenance-Free
Made in the USA



Aluminum

| | |
|---------------|-------------|
| Item | 4013-15 |
| Height | 45" |
| Load Capacity | 75,000 lbs. |
| Top | 5" |
| Base | 14" |
| Weight | 20 lbs. |

Adjustable Spin Top Steel

42" - 46" screw rise
8" rubber tires

| | |
|---------------|-------------|
| Item | 4013-13 |
| Height Range | 42" - 46" |
| Load Capacity | 75,000 lbs. |
| Top | 5" |
| Base | 14" |
| Weight | 72 lbs. |



Dolly Pad

On soft ground use wood pads under the landing legs. Install a pair of jacks at the front end.

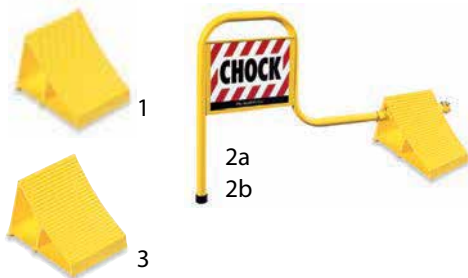


4024-04 17" sq. x 3" high

TRUCK DOCK SAFETY – Truck Wheel Blocks

A Wheel Block for Every Dock Situation

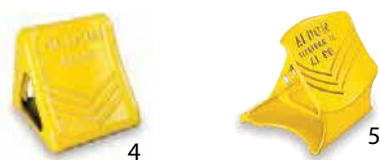
Feather-Light Aluminum



Walk-In Aluminum Wheel Block



Cast Iron



Resilient



7. Easy to Install feather-light aluminum.
Easy for the driver to see from the cab.

4012-11

| Key | Description | Part Number | W | L | H | Weight |
|-----|----------------------|----------------|--------|---------|---------|---------|
| 1 | LWC Block | 4012-01 | 6" | 8-3/4" | 6" | 4 lbs. |
| 2a | LWC Block w/Flag | 4012-13 | 6" | 8-3/4" | 6" | 13 lbs. |
| 2b | HWC Block w/Flag | 4012-02 | 7" | 10-3/4" | 8" | 15 lbs. |
| 3 | HWC Block | 4012-03 | 7" | 10-3/4" | 8" | 7 lbs. |
| 4 | AL-95 Block | 4012-06 | 9-1/8" | 8" | 8-1/2" | 16 lbs. |
| 5 | AL-96 Block | 4012-04 | 10" | 10-1/2" | 10-3/4" | 27 lbs. |
| 6 | RWC Block | 4012-05 | 7" | 10" | 8" | 12 lbs. |
| 7 | Walk-In Block w/Flag | 4012-11 | 7" | 10-3/4" | 8" | 14 lbs. |

CRANE STOP SAFETY

Portable Crane Stops



Cushion-Slide Crane Stops

Drag plates allow stop to slide some distance to absorb impact. On smaller sizes of rail, plates may interfere with rail hook bolts — use non-slide crane stops in such cases.

Non-Slide Crane Stops

Wedge dogs lock stop to rail head and do not interfere with rail hook bolts. On impact, stops may slide minimally. Tighten bolts frequently.

Bumper Contact Type



For crane bumpers (maximum bumper centerline 12" above top of rail). Specify bumper height, rail size, and section.
4016-08

Bumper Contact Type



For crane bumpers (maximum bumper centerline 12" above top of rail). Specify bumper height, rail size, and section.
4016-21

Wheel Contact Type



Specify wheel diameter, rail size, and section.
Stops are cut to fit a specific wheel diameter.
4016-07

Wheel Contact Type

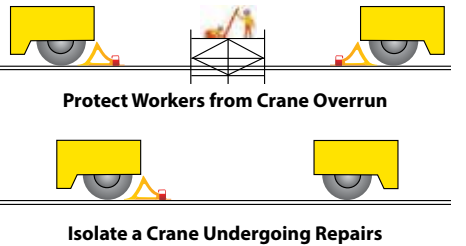


Specify wheel diameter, rail size and section.
Stops are cut to fit a specific wheel diameter.
4016-20

For All Crane Stops

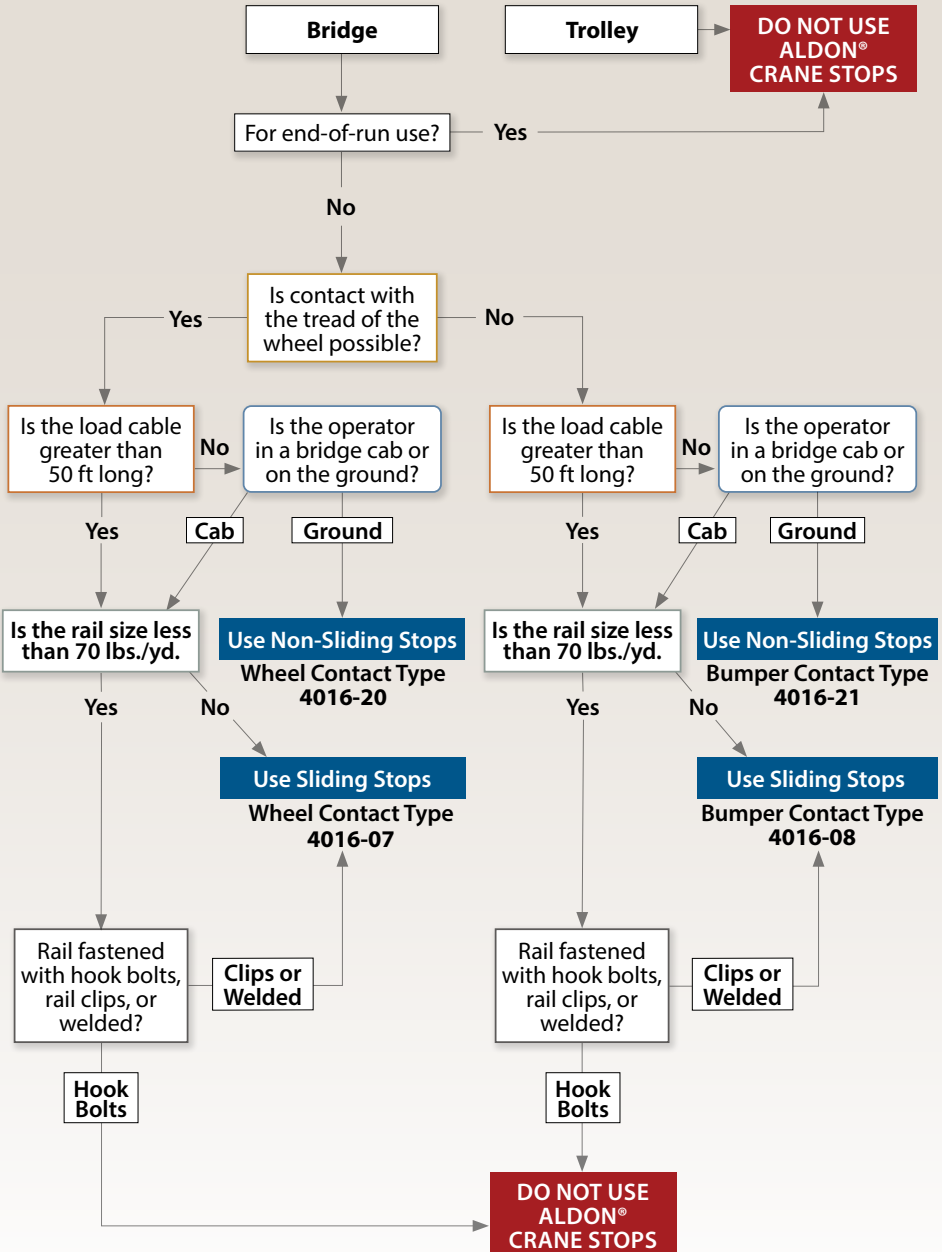
Use in pairs | Align stops | Do not use at end of crane run.
Allow ample distance between crane stops and the object to be protected.

Single or Multiple Crane Operations
Overhead bridge cranes: 1910.179(l)(2)(i)(e)
Where other cranes are in operation on the same runway, rail stops or other suitable means shall be provided to prevent interference with the idle crane.



CRANE STOP SELECTION MATRIX

How to Choose the Correct Crane Stop



RAILCAR STABILIZERS AND CAR STANDS



Railcar Stabilizer

For use as secondary support to power lifting jack. Do not use as sole support of car. No worker should stand underneath raised car.

Custom-made to fit your railcars.

Please request a sizing form (or download from our website).

We will send you a drawing for approval.

Jack height cannot exceed 54"



Maximum screw elevation 6".
Load Capacity: 75,000 lbs.
Top Cap: 5" diameter.
Base: 19" diameter.

4013-01-S Spin-Top Screw

Fixed Height Freight Car Stand

Use as back-up support for power lifting jacks. Do not use as sole support of car.

Base: 19" diameter.

Top: 12" x 13½" square.

Load capacity: 125,000 lbs.

Custom-built to your car height requirement.

Please request a sizing form.

4024-01 Car Stand



Oak Pad for Car Stand

1-3/4" thick x 9-3/4" x 11-1/4"

4024-01-A



Worker Training & Safety Audits



Railroad Operations and Safety Training

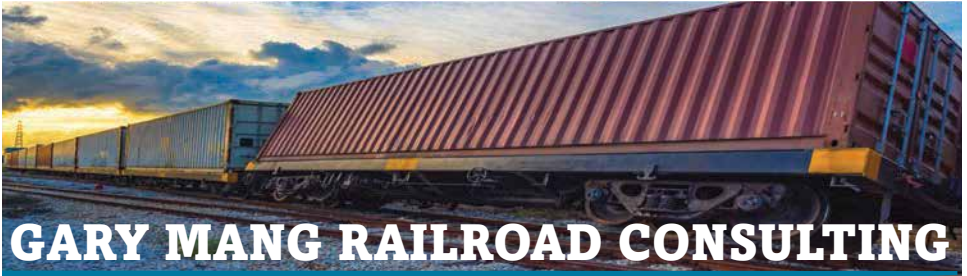
Onsite and Online Classes taught by experienced railroaders.

- Industrial Switching Training
- Freight Car Loading/Unloading Training
- Rules Compliance Audits
- Track Inspection Training



Railsafetraining.com | info@railsafetraining.com | 712.212.4145

Railroad Consulting



GARY MANG RAILROAD CONSULTING

SERVICES INCLUDE:

- *FRA mandated inspections of tracks and switches monthly.*
- *Individualized track geometry testing recommendations.*
- *Provide maintenance program management. (Budgeting PPR, Test data analysis, CBM)*
- *RWIC Flagging.*

My goal is to maximize your track structure to its full capabilities, keeping it safe, reliable, and cost efficient.

GARY MANG CONSULTING, LLC

(847) 265-9733

www.railroad-inspections.com



Courtesy of David P. Jordan

In 1904, when Aldon Company was established, our market was limited to the railroads, many of which were headquartered in Chicago. Over the many decades since then, our market has expanded to include rail-using industrial firms in more than 300 different kinds of industries.

Aldon® can provide all the basic rail safety and track repair products that you need in your rail yard.

Give us a call.



Aldon Company, Inc. | 3410 Sunset Avenue | Waukegan, Illinois 60087

PH. 847.623.8800 | FX. 847.623.6139
www.aldonco.com | e-rail@aldonco.com

Follow us on

