



ALDON® SWITCH CUBE®
Railroad Switch Direction Indicator

INSTALLATION GUIDE



Aldon Company, Inc. | 3410 Sunset Avenue | Waukegan, Illinois 60087

PH. 847.623.8800 | FX. 847.623.6139

www.aldonco.com | e-rail@aldonco.com

Before installing, be sure you have the correct Switch Cube® Indicator assembly for your switch stand.

LEFT-HAND SWITCHES



4015-164 (Double Yellow)



4015-160 (Red Stop)



4015-284 (Double Red)

RIGHT-HAND SWITCHES



4015-165 (Double Yellow)



4015-163 (Red Stop)



4015-285 (Double Red)

ALTERNATE CUSTOM SIGN PLATES



INSTALLATION

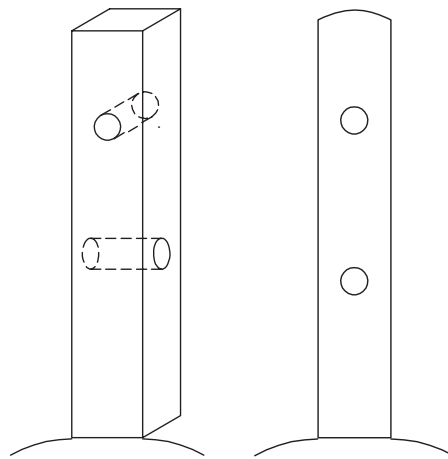
1. Line the switch for main track through travel

Left-hand switch (shown above) is lined for through travel and shown from the viewpoint of the "switch point" end.



2. Prepare the switch stand mast for the Mounting Platform

Mounting Platform underside and top

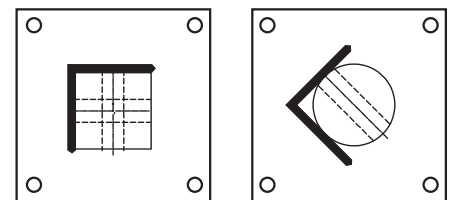


Square mast

Round mast

Remove any sleeve over mast.

Slotted angle bracket has been factory welded for square mast or round mast.



Bolt bracket through holes in mast. Top plate must sit "square" to the track. To square up top plate, loosen name plate screws.

3. Bolt the Mounting Platform to the switch stand mast.



Left-hand switch, viewed from “switch point” end. Mounting platform is in place and ready for sign plates.



4. Install 2 green plates, one opposite the other on the Mounting Platform.

Start by installing one green plate on the “switch point” side of the mounting platform.



Then install the other green plate on the opposite side of the platform (the “frog” side).



Both green plates will be perpendicular to the track.

The view at right is from the “switch point” end of a left-hand switch.

Green signs indicate that the switch is lined for through travel in either direction.

5. Next, line the switch for movement into the side track.



Note that in lining the switch for side-track movement, the green plates have rotated 90° and are now parallel to the track.

6. Install the yellow plate on what is now the open “switch point” side of the mounting platform. The yellow plate will be perpendicular to the track.

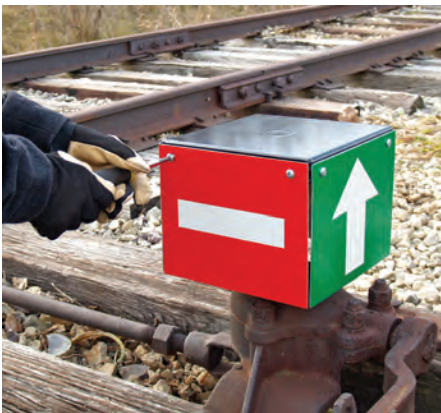


The yellow plate with upward facing black arrow indicates that the switch is lined for side track movement. (In this case a left-hand turnout is shown.)



7. Now install the last of the four sign plates.

Depending on the model of Switch Cube® Indicator there will be a yellow plate with a black arrow pointing downward in the direction of the turnout; or a red plate with a white bar; or a red plate with a white arrow pointing downward in the direction of the turnout.



The red or yellow sign plates (at either end of the switch) mean that the switch is lined for the turnout. Traffic on the main track approaching the switch must stop and not proceed.

8. Check your work.

Stand at the “switch point” end of the switch. “Read” the switch points and look at the sign on the Switch Cube® Indicator. Does the sign agree with the position of the switch points?



Switch is lined for side track movement and yellow plate with diagonal arrow indicates this.

9. Now, as a final check, line the switch back for main track through-travel

The green plates should be visible from both “switch point” end and “frog” end of the switch.

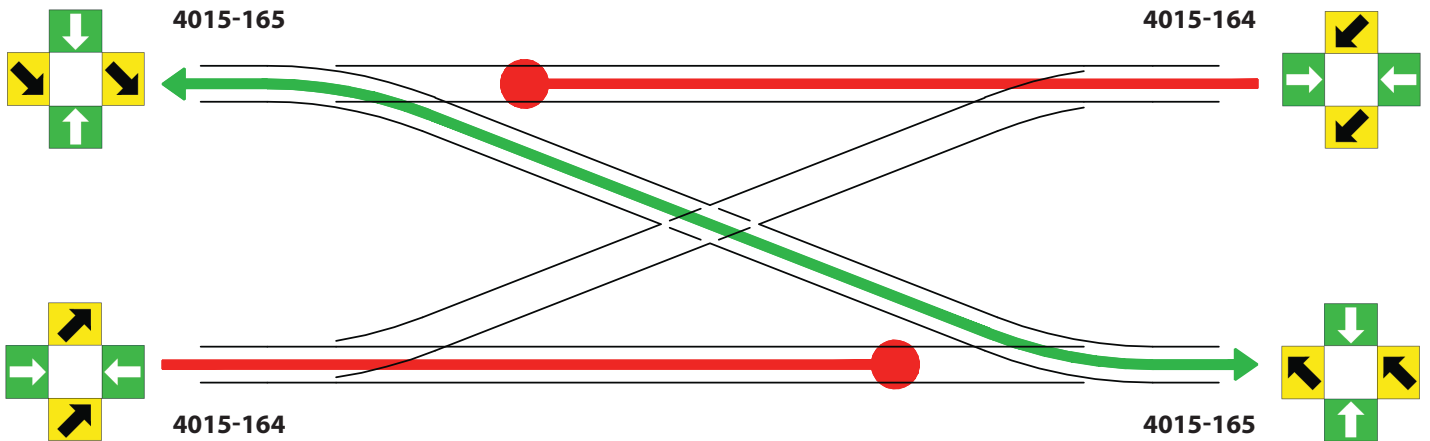


CAUTION

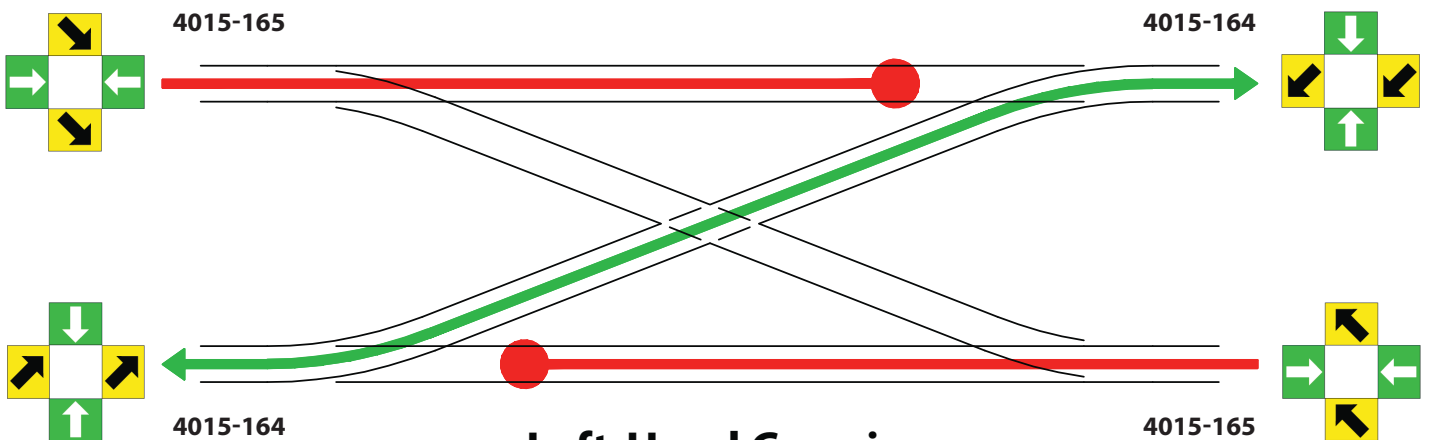
1. Always “read” the switchpoints to be sure that the Cube plates correctly reflect the position of the switch.
2. The Cube must be square to the track. If it is not, loosen the 4 screws securing this plate and rotate the Cube until square to the track. Re-tighten the screws!
3. If you change the rotation of the switch stand through repair or replacement of parts, you will need to re-install the four Cube sign plates so that they correctly reflect the movement of the switch points. Make sure the Cube is square to the track.

Installation Diagram: SWITCH CUBE® INDICATORS for CROSSOVER SWITCHES

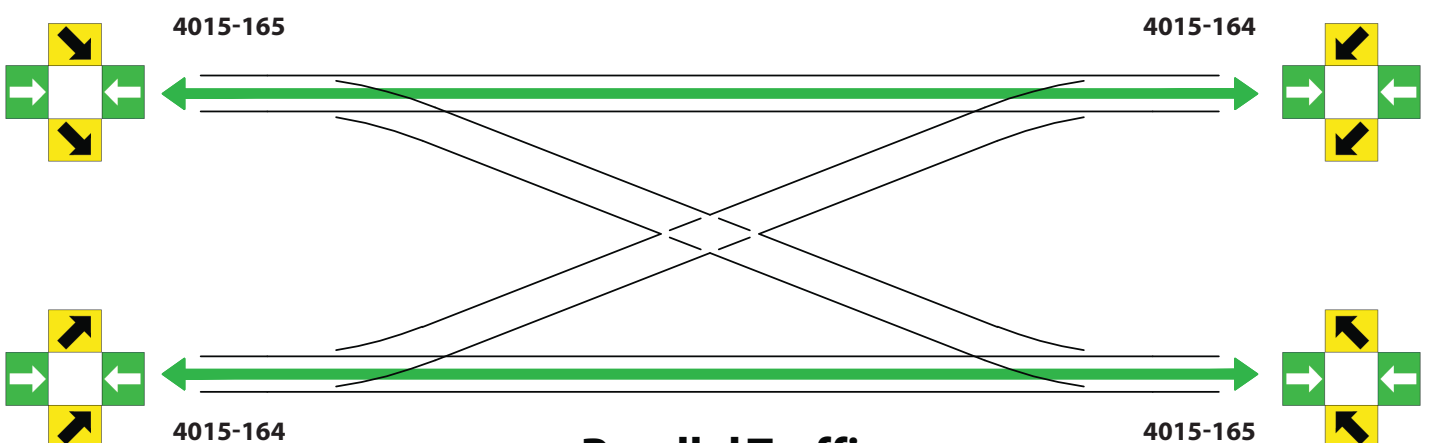
install one 4015-164 (left) and one 4015-165 (right) at each end of the crossover switch.



Right-Hand Crossing



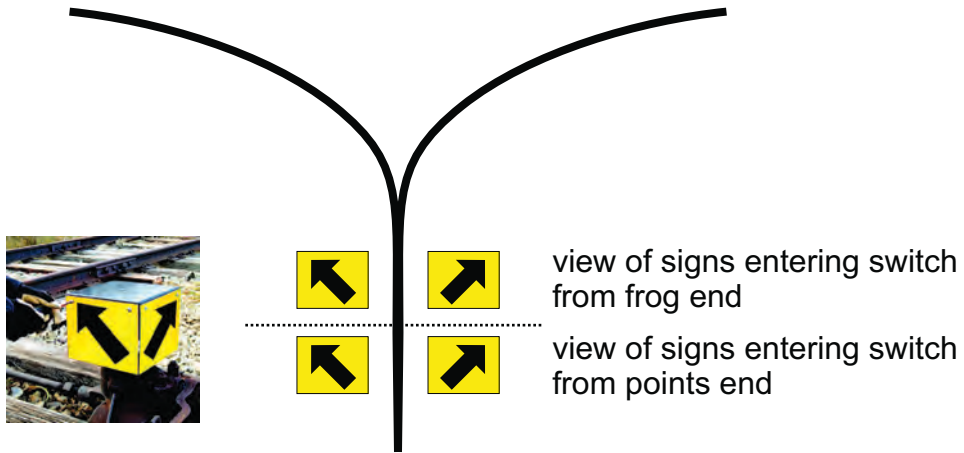
Left-Hand Crossing



Parallel Traffic

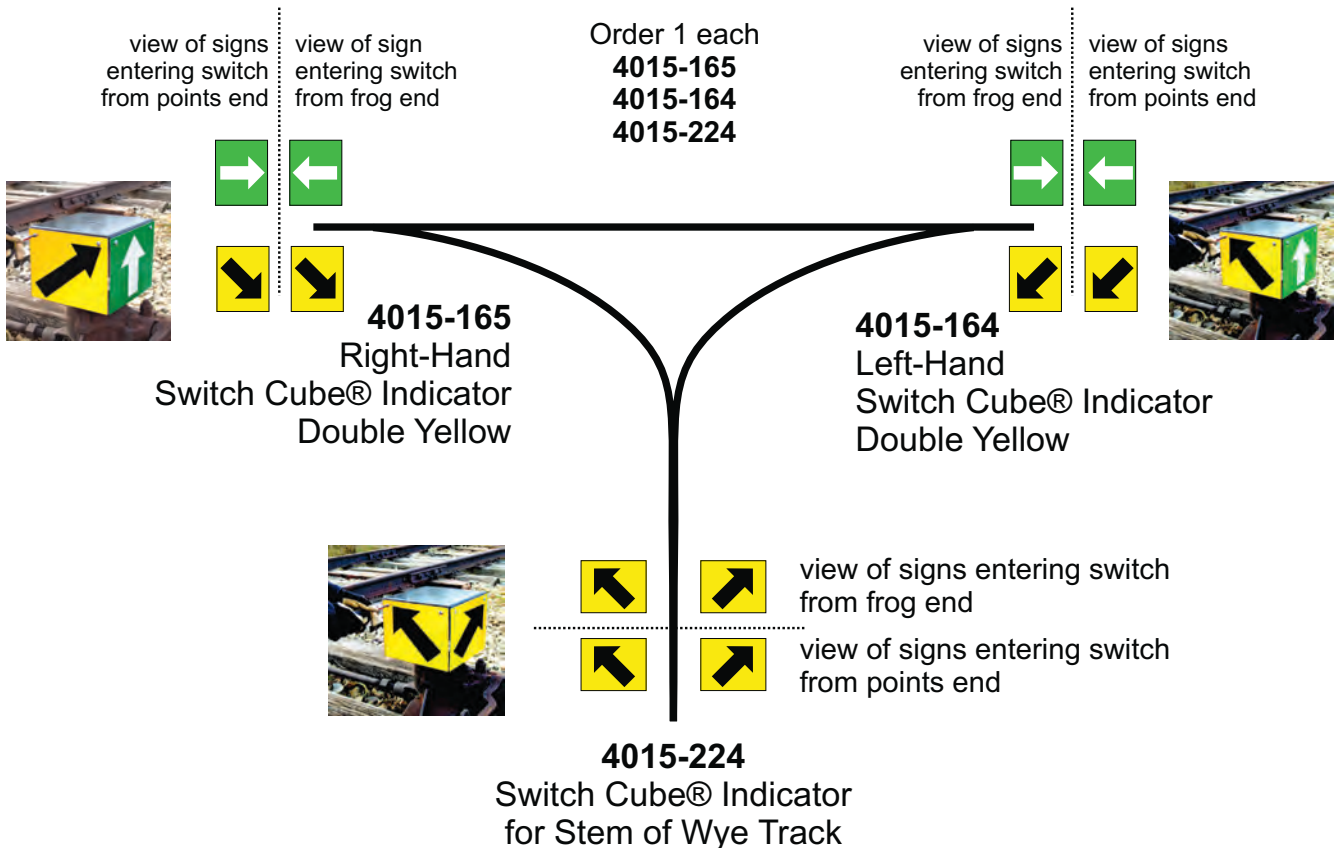
INSTALLATION GUIDE for WYE TRACK SWITCH CUBE® INDICATORS

Simple Wye: Left/Right



Order 4015-224
Switch Cube® Indicator
for Stem of Wye Track

3-Point Turning Wye Track



ALDON Company, Inc.

3410 Sunset Avenue | Waukegan, IL 60087 | aldonco.com | e-rail@aldonco.com | **847.623.8800**