

Aldon® “Burlington” Style Freight Car Rerailers

Installation Instructions

4018-04-I & 4018-04-O



ALDON®
Safety on Track Since 1904

Aldon Company, Inc. | 3410 Sunset Avenue | Waukegan, Illinois 60087

PH. 847.623.8800 | FX. 847.623.6139
www.aldonco.com | e-rail@aldonco.com

Aldon® “Burlington” Style Freight Car Rerailers

4018-04-I & 4018-04-O Installation Instructions

Only Install on Rail Sizes 100-142lbs.

- For use with standard size cars and locomotives.
- Install rerailers as close to derailed car as possible.
- Rerailers can be reversed in direction and exchanged in position to suite different derailed wheel situations.
- A rail pull (gauger) maybe required if the track gauge is too wide.
- All employees should keep a safe distance when derailed car is being rerailed.

Recommended Tools for Installation

Ballast Shovel

4123-03



Sledge Hammer

4123-95



Spike Maul

4123-17



Aldon® “Burlington” Style Freight Car Rerailers

1. Always use the appropriate lifting device to transport rerailers.



Aldon® Two-Man Carrying Pole pictured.

2. Always install rerailers on good ties. Make sure the ties are not rotten or splitting and track spikes are installed correctly.



A spike maul may be needed to drive loose spikes into the ties.

Aldon® “Burlington” Style Freight Car Rerailers

3. Remove ballast on both sides of rail.



4. Position both rerailers on the correct side of the tracks.
The position of the rerailers depends on the derailed wheels.



Outside Rerailer (Field Side)



Inside Rerailer (Gauge Side)

Aldon® “Burlington” Style Freight Car Rerailers

5. Place both rerailers as close to the rails as possible.



Aldon® “Burlington” Style Freight Car Rerailers

6. Next, slide rerailer in the same direction that the railcar is coming from.



Arrow indicates the direction the railcar is coming from.

When the tooth of the rerailer contacts the tie, the rerailer is positioned correctly. This helps prevent the rerailer from moving.



Slide rerailer until tooth is contacting tie.

Aldon® “Burlington” Style Freight Car Rerailers

7. Now, install the rerailer clamp (slotted end first) underneath the rail, then continuing through the underside of the rerailer.



Then, insert the slotted end of the clamp up through the square hole on the other side of the rerailer.



Aldon® “Burlington” Style Freight Car Rerailers

Next, slide the clamp onto the base of the rail.



8. Now, insert the wedge into the “slot” on the clamp in the same direction the railcar will contact rerailer.



Wedge is inserted in same direction.

Aldon® “Burlington” Style Freight Car Rerailers

9. Hammer the wedge until the clamp is secure to the base of rail. The wedge should remain fixed to the clamp without falling out.



Removal Process

- To remove rerailers, repeat steps 7-9 in reverse order.
- Replace ballast after rerailers have been removed.

Have A Question?

“ASK ALDON”
AskAldon@aldonco.com

Aldon® Replacement Parts

Burlington Wedge



6134

Burlington Clamp



6135

Recommended Products

Rail Pull

Bring rails back into gauge after a derailment so rerailing can proceed. Cars can freely pass over rail-pull clamp plates. Plates are solid formed 1/2" steel.



4023-74

Wrench & Socket Kit

Wrench and Socket Kit for Rail Pull consists of 1/2" sq. dr. ratchet wrench and 1/2" sq. dr. by 1" 8-point impact socket.



4023-78

Recommended Products

Two-Man Carrying Pole

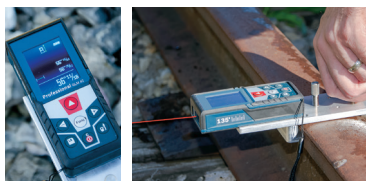
Workers can easily carry heavy, bulky items with our Two-Man Carrying Pole. Perfect for rerailers and derails. Carrying Pole is 8 feet long, made of steel tubing, with a pincer hook at the center. Maximum load: 250 lbs.



4024-54

Spot-Check Laser Gauge

The convenience of a tape measure with the speed and precision of a laser. Measures gauge in imperial and metric units.



4022-26

Track Inspection Tape Measure

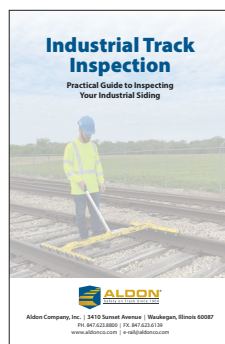
Magnetic tip allows one-person measurement of track gauge. Built-in scale for checking limits of gauge measurement.



4124-316

Industrial Track Inspection Guide

Practical guide to inspecting your industrial siding.



4010-03



Aldon Company, Inc. | 3410 Sunset Avenue | Waukegan, Illinois 60087

PH. 847.623.8800 | FX. 847.623.6139
www.aldonco.com | e-rail@aldonco.com

Follow us on



Printed in USA August 2021