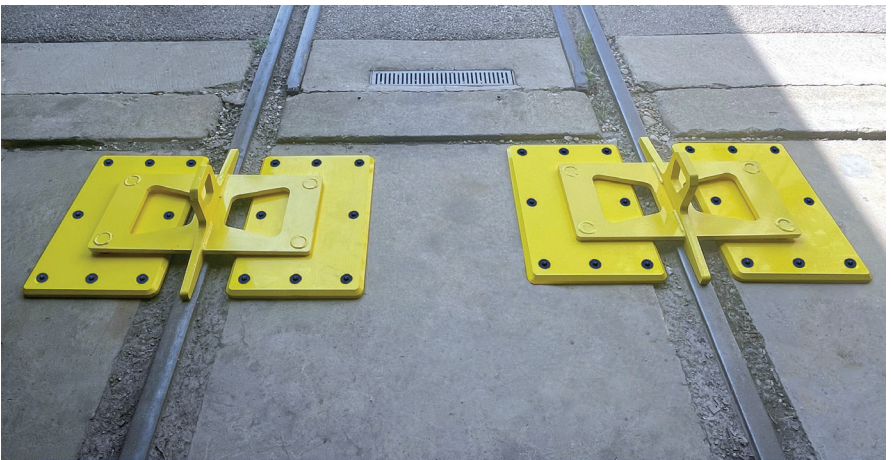


Aldon® Two-Way Flush Rail Car Stops

Installation Instructions

4016-26



ALDON®
Safety on Track Since 1904

Aldon Company, Inc. | 3410 Sunset Avenue | Waukegan, Illinois 60087

PH. 847.623.8800 | FX. 847.623.6139
www.aldonco.com | e-rail@aldonco.com

Aldon® Two-Way Flush Rail Car Stops

4016-26 Installation Instructions

Patent Applied For

Cautions

- Always use in pairs. (Sold Individually)
- Limit 1 car at 3 mph or 2-3 cars at 1 mph.
- For use on flat track only.
- Provide ample space between car stops and objects being protected.
- Only install on good concrete.

Parts List For a Complete Set

- | | |
|---------------------------------|-------------------------------|
| (4) Mounting Plates (7009A) | (32) Concrete Anchors (7009E) |
| (2) Flush Rail Car Stops (7009) | (32) Anchor Bolts (7009F) |

Recommended Tools for Installation



Hammer



Hammer Drill



1-5/16" Masonry
Drill Bit



1/2" Hex Allen
Wrench

Aldon® Two-Way Flush Rail Car Stops

1. Position two mounting plates next to each rail. Never install on concrete that has wide cracking or is chipping away. Always provide ample space between car stops and objects being protected.



Check to make sure all four mounting plates are sitting flush on the concrete.



Aldon® Two-Way Flush Rail Car Stops

- Next, place both flush rail car stops on top of the mounting plates. Use an appropriate lifting device to transport car stops. (Aldon® Flush Rail Car Stop Cart shown below.)



When positioning car stops on top of the mounting plates, make sure all four tabs on the underside of each car stop line up with all four holes on the mounting plates. The car stops should sit flush on top of the mounting plates when installed correctly. If they do not, shimming the mounting plates may be required. (Please contact Aldon Company)



Aldon® Two-Way Flush Rail Car Stops

Make sure the tongue of each car stop is positioned directly on the center line of each rail at both ends of the car stops.



3. Drill all eight holes on each mounting plate using a hammer drill with a 1-5/16" masonry drill bit. Always leave car stops and mounting plates in place while drilling anchor holes. This will ensure the car stops are positioned directly on the center line of each rail during final installation. **All holes should be drilled to a minimum depth of 4-1/2".**

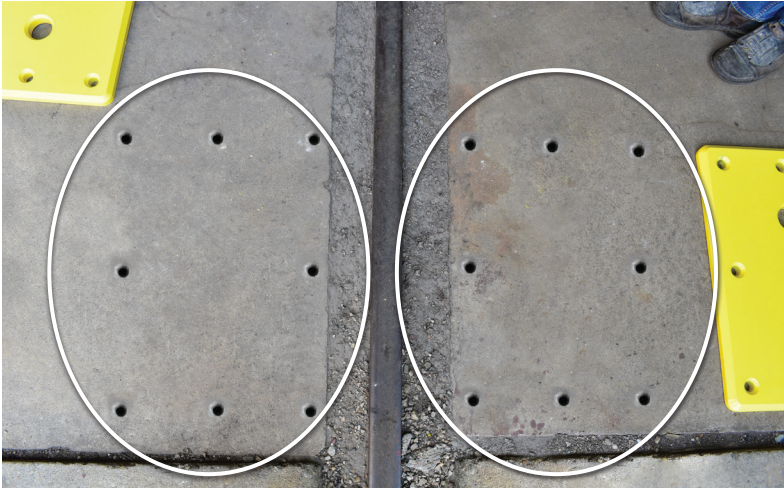


Aldon® Two-Way Flush Rail Car Stops

4. After all anchor holes have been drilled, remove both car stops using the appropriate lifting device.



Then, remove all mounting plates to expose the anchor holes.



Aldon® Two-Way Flush Rail Car Stops

5. Now, insert the concrete anchors into the exposed holes.
Anchors should not sit above concrete.



6. After all anchors have been installed, reposition the mounting plates over the anchor holes.

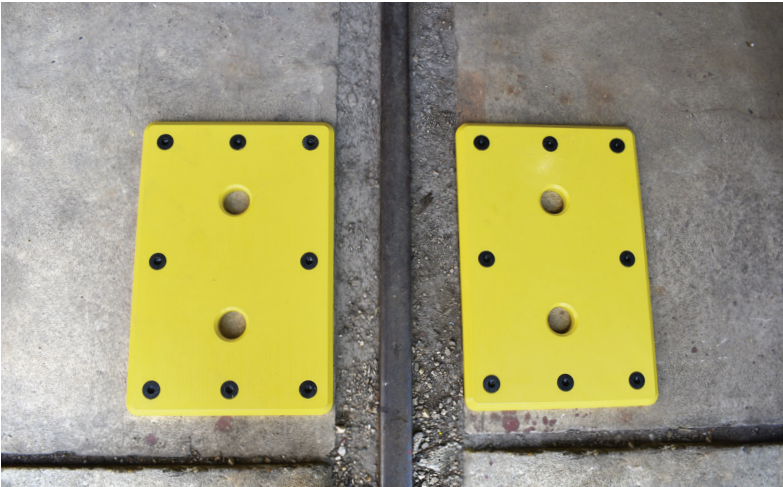


Aldon® Two-Way Flush Rail Car Stops

7. Insert all anchor bolts using a 1/2" hex allen wrench.



Make sure all anchor bolts are fastened completely.
The bolt head should be flush with the mounting plate.



Aldon® Two-Way Flush Rail Car Stops

8. Reinstall both car stops. All four tabs on the underside of each car stop should line up with the holes on the mounting plates.



Always check to make sure both car stops sit flush on top of the mounting plates in a fixed positioned. (Shimming the mounting plates may be required.)

The tongue on each car stop should be positioned on the center line of each rail. If they are not, remove the car stops immediately until proper installation is achieved. If shimming is required, contact Aldon Company.



Aldon® Replacement Parts

Concrete Anchors



7009E

Anchor Bolts



7009F

Related Items

Flush Rail Car Stop Cart

Designed for installing and removing flush rail car stops. The cart allows one worker to easily maneuver car stops in any elements while only having to lift 30 lbs.



4025-20

Related Items

Doorway Barricade Sign Holder

Mount in front of overhead shop doors to protect your employees. The extra-long aluminum sign pole mount allows you to apply up to four padlocks for safety. Locks in up or down position.



4015-295

Magnetic Flex-E Form Sign Holder

When impacted, Flex-E Form sign holders are designed to spring back to an upright position. Secured by three powerful neodymium magnets and removed in seconds with the Flex-E Form removal tool. (4015-294) Will accommodate any size sign with adjustable U-bolt sign mounts.



4015-293



Aldon Company, Inc. | 3410 Sunset Avenue | Waukegan, Illinois 60087

PH. 847.623.8800 | FX. 847.623.6139
www.aldonco.com | e-rail@aldonco.com

Follow us on



Printed in USA October 2021