

## Roadmaster Rolling Gauge Reader



Gauge scale (55.5 - 58.5") can be read through a lexan lens from either side of Roadmaster.



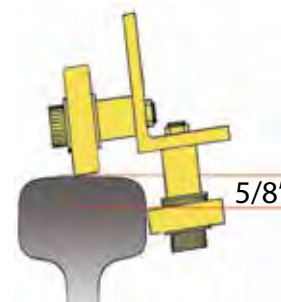
Two-piece assembly features spring-loaded piston for precise gauging.

**Rolls through switches and rail crossings without stopping.** Continuous gauging with 2" clearance above rail.

Easy rolling thanks to 24 steel roller bearings which ride on the top and on the gauge side of the rail. Reversible push handle allows change of direction.

The 36" long wheel base of Roadmaster ensures that while some of the bearings are in the gap of the frog, other bearings remain in contact with the rail on the top and the side. Travel through the switch is therefore continuous.

**4022-14** Weight 34 lbs.  
**Accessories Not Included**



Side rollers contact rail 5/8" below head.

## Accessories for Roadmaster

### Digital Track Level (optional)



Liquid crystal display with 1/2" numerals. Measures elevation in degrees and percent.

**4022-12** Weight 1 lb.

### Distance Counter (optional)



Counter measures 10,000 feet-of-travel.

**4022-20** Weight 1 lb.

### Carrying Case (optional)



Reinforced corners. 42" x 42" x 6"

**4022-24** Weight 10 lbs.

**Economy Track Gauge Reader**

**Does not roll through switches.**

A worker can check hundreds of yards of track without having to bend and stoop every few feet to check gauge.



Measure up to 2" of gauge variation (56" to 58" for standard gauge track). Insulated roller bearings provide smooth travel (will not go through switches or crossings). Side rollers contact rail 5/8" below head to avoid burrs, yet pass over joint bars. Easy-to-read gauge scale (1/8" increments) can be read while walking. Scale can be calibrated to a specific gauge before starting out to inspect the track.

**Standard Gauge**

**4022-10** Weight 33 lbs.

**Narrow Gauge**

**4022-10A** (specify gauge and rail size)

**Accessories Not Included**

**Accessories for Track Gauge Reader**

**Sold Separately**

**Digital Track Level** (optional)

**4022-12** Weight 1 lb.



**Distance Counter** (optional)

**4022-13** Weight 1 lb.



**Carrying Case** (optional)

39" x 20" x 7"

**4022-11** Weight 16 lbs.



**Gauge Restraint Reader**



Makes FRA-mandated inspection of yard tracks easier. At a comfortable walking pace, one worker can verify no-load track gauge, then stop at intervals to apply 4000 lbs. side force to rails, simulating the effect of locomotive wheels on rail. Reader conforms to FRA 213.110 and 213.53(b) requirements for accurately measuring gauge restraint.



Built like a steel bridge, but breaks into three pieces for easy transport to and from track.



Hinged pressure bar swings down to check gauge restraint at any desired point. Two-speed hydraulic pump advances and retracts pressure bar. Ends of pressure bar contact rail web fillet with 4000 lbs. force.

Telescopic assembly rolls freely through switches and over guard rails and rail crossings. Insulated roller bearings measure gauge 5/8" below top of rail. Bearings can be adjusted lower to clear heavy overflow rail.

**4022-15** Weight 103 lbs. (each section less than 35 lbs.)

**Carrying Cases** (set of 2) (optional)

**DISCONTINUED**

For Gauge Restraint Reader  
Case for hydraulic ram push bar, 60" x 16" x 7"  
Case for yellow 2 pc. chassis, 48" x 24" x 14"

**4022-23** Weight 35 lbs.



## Adjustable Aluminum Level & Gauge



An accurate way to measure two inches of gauge variation to within 1/16". Slide rule action and large type scale for easy reading. Gauge setting can be locked with thumb screw. Also measures cross elevation from 1" to 7" with 1/8" accuracy.



**4022-07** Two piece 56" - 58" Gauge Range Weight 11 lbs.

## Fixed Gauges & Track Levels

Standard gauge or any custom gauge desired. Imperial or Metric.



**4022-02** Aluminum Track Gauge  
Weight 6 lbs.



**4022-01** Aluminum Track Level  
Weight 5 lbs.



**4022-03** Combination Aluminum Level/Gauge  
Weight 5 lbs.



**4022-05** Steel Pipe Gauge  
Weight 30 lbs.

## Magnetic Track Inspection Tape Measure

Magnetic tip allows one worker to quickly check track gauge.

Color coded overlay scale gives tolerance for out-of-gauge track and cross-checking guard rail and frog spacing for Class 1 through Class 5 track.



**4124-316** 25 Foot Tape  
Weight 1 lb.



## "SPOT-CHECK" Magnetic Laser Gauge



Battery-powered laser unit measures gauge to within 1/32" accuracy. Aluminum bracket with two rare-earth magnets holds Spot-Check on rail. Two adjusting screws raise or lower laser beam with laser range of 135 feet. Worker aims laser beam at a point 5/8" below the head of the opposite rail and reads the gauge. Spot-Check makes it easier to check track gauge at intervals - previous readings are displayed as well as current readings.

Laser beam contacts opposite rail 5/8" below top of rail for accurate reading of gauge. Gives measurements in inches/feet or meters/centimeters. Also displays previous measurements. Previous gauge readings are retained for comparison. Pocket sized and better than a tape measure.



**4022-26**

## Rolling Distance Counter



Four foot circumference wheel with hard rubber tire measures up to 10,000 feet.

Easy-to-read dial shows "feet" in white digits on black band.

Brake prevents accidental backward movement of counter.



Rotary knob allows dial to be cleared instantly. Rail guide keeps product on surface of all rail sizes while rolling.

**4024-02** Weight 13 lbs.

## Rail Head Wear Gauge

Combination tool measures head wear vertically and horizontally to an accuracy of 1/32 of an inch.

Gauge measures rail sizes 112 lbs., 115 lbs., 119 lbs., 132 lbs., 133 lbs., 136 lbs., and 141 lbs.

**4124-210** Weight 5 lbs.



## Stringline Rail Curve Measuring Tool



Measure track curvature or visually judge the straightness of straight rail. Steel paddles lock to rail head.

The custom 12" ruler measures the space between the rail head and the red-marked midpoint of a 62' cord.

Each inch of space between rail and string equals one degree of curvature.

**Accuracy of measurement is +/- 4%.**

**4024-03** Weight 5 lbs.

## Red Vinyl Magnetic Markers

Reflective red vinyl marker with magnetic backing.



Place on web or base of rail. SIZE: 2.75" x 12"

**DEFECT**

**4015-257**

**WIDE GAUGE**

**4015-258**

**LOOSE JOINT**

**4015-259**

**RAIL GAP**

**4015-282**

**BAD TIE**

**4015-281**

**CRACKED RAIL**

**4015-283**