

## Safe Ways to Use Your Forklift to Open Box Cars

### ALDOR Box Car Door Opener

ALDOR Car Door Opener for traditional open docks where there is a clear run alongside the box car. Dock must be at least 12 feet wide.



#### Adjustable-Length ALDOR — Steel

Arm advances in 6 inch increments with hitch-pin lock. Fully extended, beam reaches out over 48" gap between dock edge and side of car.

**To order, request a sizing form.**

**4020-02** Weight 350 lbs.  
Fits fork blades up to 5" wide.  
For wider blades contact us.

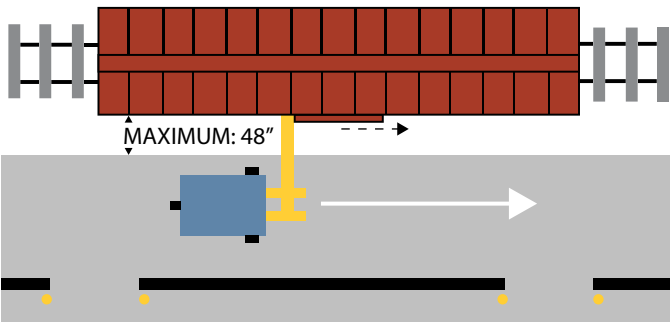


#### Fixed-Length ALDOR — Aluminum

Overall length, 90 inches. Beam reaches out over 48" gap between dock edge and side of car.

**To order, request a sizing form.**

**4020-14** Weight 80 lbs.  
Fits fork blades up to 7" wide.  
For wider blades contact us.



ALDOR design meets OSHA's "de minimus" exception to the ban on using a forklift to open box cars: Force is parallel to car door so no damage is done to forklift or car door.

Forklift and operator remain safely out of the way of the door at all times.

### Railroad Dock Board

Portable steel bridge from box car to dock.

Lifting loops or chains on dock board allow easy placement by forklift.

Curbs at sides of dock board guide forklift driver.

Straight-cut or flared approach aprons.

Locking rings on each side wedge dock board against dock.

Capacities: 15,000 lbs., 22,000 lbs., and 42,000 lbs.

**Request sizing form for pricing.**

**4128-01**



Safe Ways to Use Your Forklift to Open Box Cars

EASY-SLIDE® Car Door Opener



EASY-SLIDE® satisfies OSHA's "de minimus" exception to the ban against using forklift blades directly to open box car doors.

**No damage to forklift.**

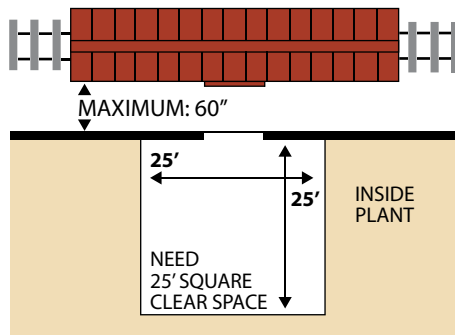
**No damage to car doors.**

Welded-steel frame fits over paired fork blades up to 5" wide. Steel pivot arm stretches 60 inches beyond frame to reach any car door. Pincer hook on pivot arm engages car door pull-tab. EASY-SLIDE® opens sliding doors and plug doors.

For wider blades contact us.

U. S. Patent #8,568,078

**INTERIOR DOCK**



To order, request a sizing form.

**4020-13** Weight 216 lbs.



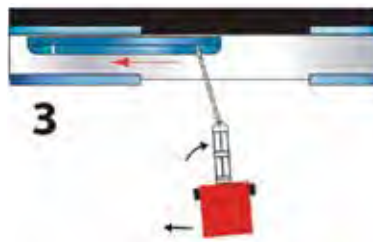
When there is no external dock, EASY-SLIDE® uses leverage and the power of your forklift to fully open or close car doors without damage to forklift or door.



Hook on to door pull tab. Rotate forklift to left to pull door open.



Continue rotating left while backing up.



When door is half-open, pivot to right to change leverage angle.



Drive forward and rotate left to push door fully open.

